

DESIGN PORTFOLIO

Elena Disabato

emd@redkimono.com
www.redkimono.com

INTRODUCTION



Hi, I'm Elena.

...a Creative Designer with 10+ years' relevant experience in digital and print design, and creative project management. I specialize in presentation design, sales pitches, graphic design, branding, logos, Squarespace + WordPress websites, and marketing consulting. Relevant experience download links are:

- Resumes
- Web Design portfolio

Each work sample is multifaceted in nature and demonstrates high-level capabilities in merging branded design with original visual and written content.

These samples include select pages showcasing each project's various components.

Feel free to reach out for additional information and full samples. Thank you for taking the time to review my work.

Kind regards,

Elena Disabato, LEED Green Associate

emd@redkimono.com / www.redkimono.com

Contents

Click on each section title and skip to it.

WORK SAMPLE DISCLAIMER

I own exclusive rights to each project in this portfolio. Each project was created by me and no one else. All information within is confidential, and not to be shared externally or for any purpose other than to vet my capabilities pertaining to an available work opportunity.

PRESENTATIONS

Pitch Decks / Training / General

SALES PITCHES

FIRM INFORMATION

Profiles / Case Studies / Resumes /
Org Charts + Placemats

GRAPHIC DESIGN

Logos / Branding / Signage

ADDITIONAL INFO

References / Client List

Pitch Decks

Each deck was created using either PowerPoint or Google Slides.

Original templates were co-branded using existing corporate and client guidelines, with graphics that emphasized the overall design.

Acting as Creative Project Manager, I led teams that would be working on each project to contribute specific presentation content for each opportunity, such as architectural renderings and technical writing.


- Swedish American Hospital
- Confidential Healthcare Client
- College of DuPage

Swedish American Hospital

PROJECT: Design a large healthcare facility and surrounding site
SOFTWARE: PowerPoint - 45 slides, InDesign
COMPONENTS: Graphics, writing, imagery, renderings
BRANDING: Merged existing team corporate guidelines with design partner's and client's

SwedishAmerican, A Division of UW Health
CLINICAL MEDICAL OFFICE BUILDING

EXCEEDING EXPECTATIONS + ELEVATING PERCEPTION



SMITHGROUP JJR | HAGNEY ARCHITECTS

Advocate Healthcare

Advocate Illinois Masonic Medical Center | Center for Advanced Care
Chicago, Illinois


SMITHGROUP JJR



SMITHGROUP JJR | HAGNEY ARCHITECTS

Common Threads

"Through excellence in healthcare and compassionate service, we care for our community."
-SwedishAmerican Mission



SMITHGROUP JJR | HAGNEY ARCHITECTS


Common Threads

We're just like you...

Our people make the difference — they are our team's past, present and future

Longevity — combined 189 years' experience

A tradition of innovation — excellence in designing for patient-centric care




SMITHGROUP JJR | HAGNEY ARCHITECTS

Swedish American Hospital (con't)



Common Threads

"Through excellence in healthcare and compassionate service, we care for our community."
-Swedish American Mission



SMITHGROUP JJR | 18

Common Threads

We're just like you...

Our people make the difference — they are our team's past, present and future

Longevity — combined 189 years' experience

A tradition of innovation — excellence in designing for patient-centric care



Swedish American Hospital (con't)

public spaces



patient residences



nursing units



clinical care centers



Family

Clinical

SMITHGROUP JJR

Confidential Healthcare Client

PROJECT: Pitch to investors for additional revenue + 5-year report
SOFTWARE: Google Slides - 11 slides (redacted), InDesign
COMPONENTS: Graphics, writing, imagery, renderings
BRANDING: Merged existing team corporate guidelines with client's



Executive Summary

In 2022, we made significant investments across its marketplace and core offering, driving ROI, efficiencies and improved emp and Member experiences.

These investments continue to propel our point of differentiation and prohibit competitors from replicating its model.

2022 By the Numbers

- ★ \$XXXM raised to date
- ★ X-Xx YoY growth
- ★ XX+ Medicare Advantage plans
- ★ XXX active members in 5 yrs
- ★ XK visits daily
- ★ XM visit hrs/yr

Agenda

Client Logo + LOGO

- Executive Summary
- Delivering a Seamless Experience for Members across Two Key Pillars
- Initiatives that Fueled Papa's Growth and Improvement this Year
- Next Steps

Confidential Healthcare Client (con't)

Initiatives that Fueled Client Growth and Improvement this Year

01 >

**Drive health outcomes
for members who
need us the most.**

- ROI
- Claims-Based Analysis
- Product Investments

02 >

**Attract and retain
quality emps to meet
member needs.**

- Visit Success Fulfillment
- emp Acquisition & Retention
- Care Team

Client

01 > Drive Health Outcomes for Members Who Need us the Most

ROI Improvements

2021	2022	NET IMPACT
<ul style="list-style-type: none"> • Focused on delivering value to all members • Difficulty quantifying our ability to close care gaps • ROI estimated based on visit activities (i.e. # of doctor appt / # of meds assistance) rather than outcomes data 	<ul style="list-style-type: none"> • More targeted approach to driving value for members with greatest needs • Developed a reliable and repeatable ROI estimation • Invested in claims analysis with X clients and in a partnership with 3rd party actuary experts to analyze outcomes data 	<ul style="list-style-type: none"> • Ability to honor client targets by consistently delivering an ROI of -X-Xx depending on benefit configuration • Source of impact: XM+ XX database augmented by health economics literature (when needed)

Client

8

02 > Attract and Retain Quality emps to Meet Member Needs

Visit Success

2021	2022	NET IMPACT
<ul style="list-style-type: none"> • Average fill rate of XX% • Focus on emp acquisition across all markets vs. markets that have the greatest needs • Lack of strategic emp incentives 	<ul style="list-style-type: none"> • XX% overall fill rate Q2 '22 • Improved process for identifying patterns and market-specific insights • Enhance indicators and org changes to inform forecasting • emp incentives aligned to fill rate 	<ul style="list-style-type: none"> • Across Client deals: XX% average fill rate, XX% emp no show rate, and XX% reschedule rate • emp NPS score of XX (scale -100 to 100, score 50 = excellent*) • Consistent, predictive strategy for filling visits

Client

9

College of DuPage

PROJECT: Campus Master Planning, Landscape Architecture and Civil Engineering services for a community college
SOFTWARE: PowerPoint - 48 slides, InDesign
COMPONENTS: Graphics, writing, imagery, renderings
BRANDING: Merged existing team corporate guidelines with client's



INTERNATIONAL FIRM, LOCAL PRESENCE



- 160 Years of Practice
- 960 Professionals in Ten Offices
- 80% Repeat Clients
- 200+ Recent Design Awards

SMITHGROUP JJR



College of DuPage

SMITHGROUP JJR



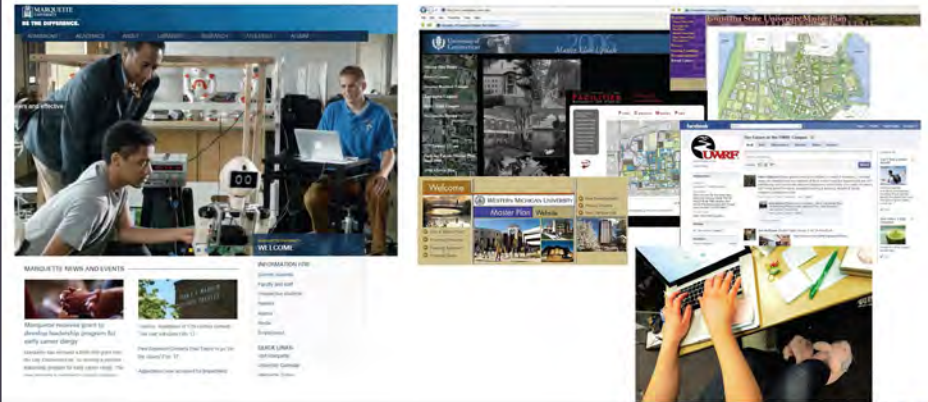
College of DuPage (con't)

Integrated Planning.



A Campus and Community Conversation.

Contributing to the master plan on weekends and in your pajamas



Framework Plan.

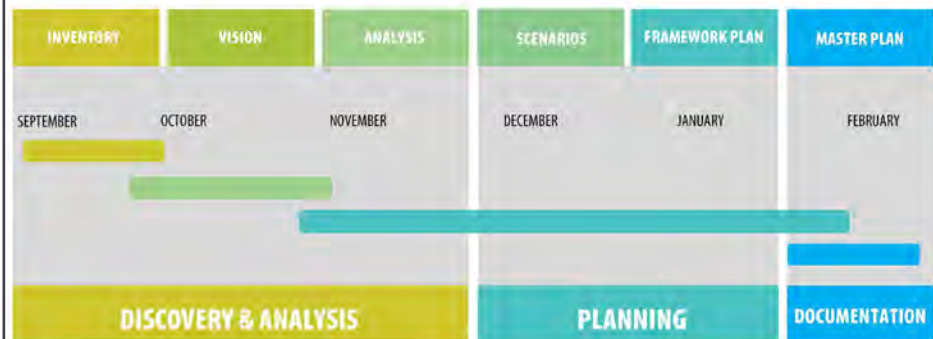
Refinements

- Preliminary Master Plan
- Space / Location Guide
- Site & Architecture Guidelines
- Housing Strategy
- Parking & Transportation Management Plan
- Utility & Technology Plan
- Illustrations
- Phasing Plan
- Financial Model
- Revised Preliminary Master Plan
- Final Master Plan



A Schedule to Get You There.

Your Actionable Plan



Training

Each deck was created using InDesign and Photoshop to develop original templates, then imported into PowerPoint.

These instructional presentations were given to multiple audiences ranging from 20 to 1,100 viewers, and 1-on-1 for C-suite training.

For The Hatchery, I created a 100+ slide technology brief to advise IT/Security consultants how to set up those systems in the gut rehab of a food facility.

- Marketing 101
- Twitter 101
- The Hatchery Technology Brief

Marketing 101

PROJECT: Train staff on AEC marketing sales process
 SOFTWARE: PowerPoint - 30 slides, InDesign, Photoshop
 COMPONENTS: Graphics, writing, imagery, process chart
 BRANDING: New based on Corporate guidelines

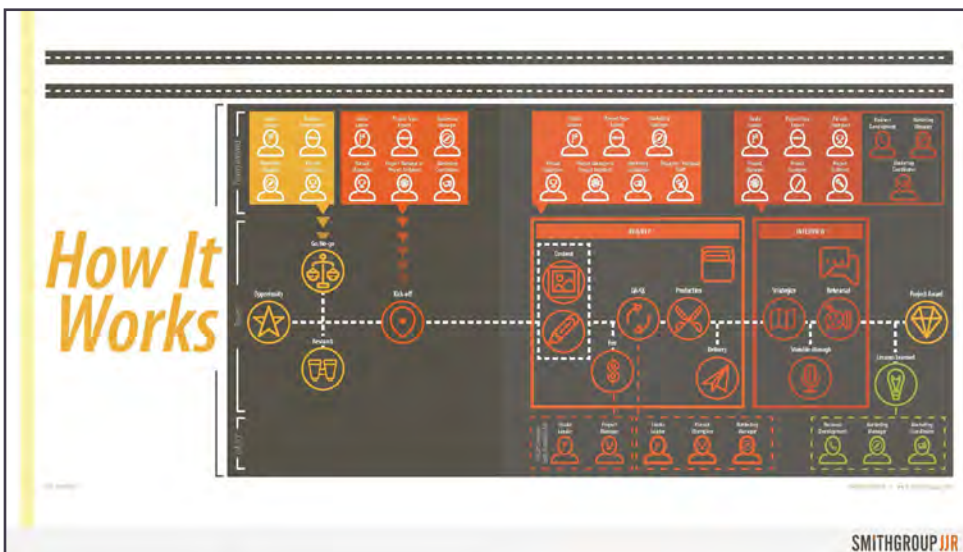


Defining Marketing

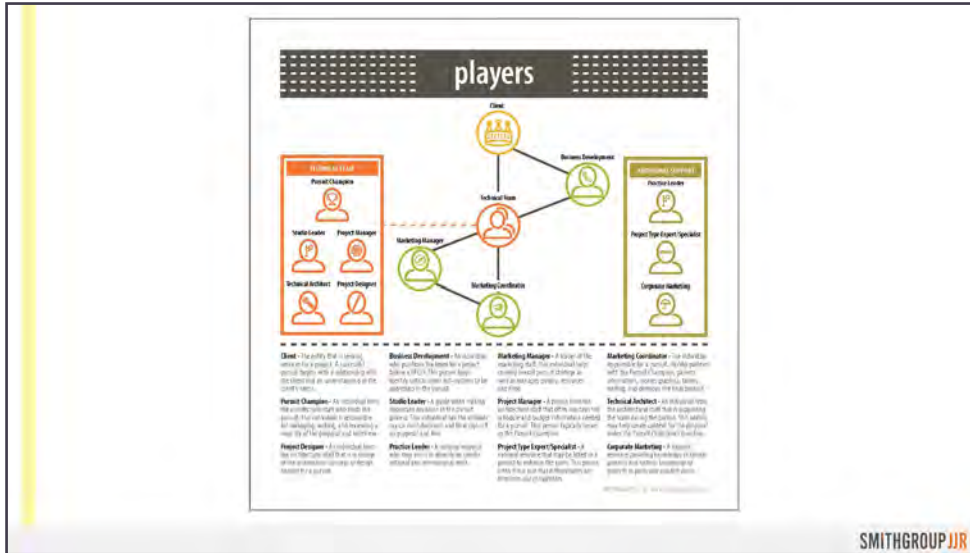
What does it help us do?

- Build relationships
- Make an impression
- Show our experience
- Win!
- Do the work
- Get the word out

SMITHGROUP JJR



Marketing 101 (con't)



SMITHGROUP JJR

cover letter

firm overview

resumes

representative work

approach

design content

forms

fee

SMITHGROUP JJR



PR

- Awards
- News Releases
- Social Media
- Articles
- E-blasts

SMITHGROUP JJR

An apple for good behavior

Green GOOD DESIGN Award

Interior Architecture Citation of Merit Award, AIA Chicago

Twitter

101

PROJECT: Train staff on Twitter functionalities + account set-up
 SOFTWARE: PowerPoint - 30 slides, InDesign, Photoshop
 COMPONENTS: Graphics, writing, imagery
 BRANDING: New based on Corporate guidelines

TWITTER: GETTING STARTED

- All about Tweets
- Set up a profile
- How to tweet
- Start tweeting!

A Step-by-Step Guide

How to get to that first Tweet and beyond

- What's a Tweet?
- Lingo in Action
- Account Set-Up
- Customize Profile
- Toolbar Actions
- RT's + Favorites
- Hashtags
- Handles
- Photos
- First Original Tweet

SMITHGROUP JJR

Lingo in action

Various actions you can perform with tweets

- Reply**
Respond directly to person who tweeted
- Retweet**
Re-post a tweet from someone else
- Favorite**
"Like" a tweet
- More**
-Embed a tweet for emailing
-Block a user or report a tweet

These actions will appear in your feed and notify original poster

SMITHGROUP JJR

Set up your account

Create your profile

- Upload your profile picture
Maximum 700k
JPG, GIF or PNG
- Add your bio
160 characters
4 or 5 short statements

SMITHGROUP JJR

Twitter 101 (con't)

Set up your account

Customize your profile

- Double-click profile picture on Main page
- Click "Edit Profile" to change imagery & bio
- Follow more handles

SMITHGROUP JJR

Getting familiar with actions

Ease into things with Replies, Retweets and Favorites

- REPLYING posts your comments on another handle
- RETWEETING allows someone's original tweet to appear in your feed
- FAVORITING lets the original posting handle to know you like their post

This helps let others know about your handle and see what type of information you enjoy

Suggestions will be made for other handles to follow and hashtags to include

SMITHGROUP JJR

Getting familiar with actions

Using #hashtags and links

- Use hashtags to categorize Tweets by keyword
- If you Tweet with a hashtag on a public account, anyone who does a search for that hashtag may find your Tweet
- Don't #spam #with #hashtags. Don't over-tag a single Tweet. (Best practices recommend using no more than 2 hashtags per Tweet.)
- Use hashtags only on Tweets relevant to the topic
- Add a link to an article, then hashtag
- Link shorteners like bit.ly.com help keep character counts down

SMITHGROUP JJR

Your first original tweet

Make it clever; set yourself apart

140 characters
Hashtag
Handle
Link
Photo

now...

TWEET!

SMITHGROUP JJR

The Hatchery Technology Brief

PROJECT: Instructions to set up IT & Security systems in food facility

SOFTWARE: PowerPoint - 120 slides, InDesign, Photoshop

COMPONENTS: Graphics, writing, imagery, plan drawings

BRANDING: New based on Corporate guidelines



The Hatchery Technology Brief (con't)

1. ENTRY INTERCOM: OFFICE STRUCTURED CABLING PLAN

- Configurable to allow for calling to individuals' cell phones, reception desk or certain telephones in the building
- Integrated with the access control system to allow intercom to unlock or lock the door
- Integrated camera to view who is at the door



- Control system to allow intercom to unlock or lock the door.
- Integrated Camera to view who is at the door
- Integrated into the IP phone system

FF ACCION
 SICNC
 Wight
 db HMS
 NOT FOR CONSTRUCTION
 The Hatchery Chicago
 T1.0A

4. CONFERENCE ROOM AUDIO/VISUAL SYSTEM

The large conference room is designed around displaying high definition content during presentations and meetings. It is anticipated that this room will be utilized the staff at the Hatchery, the lessors as well as possibly being rented out for outside functions and meetings.

The Eagle Eye Networks solution seamlessly integrates with the Brivo electronic access control solution enabling a single point of control for both systems from the user's end. Access to live or archived video may be granted to users based on need and that video may be viewed through the Brivo access control application. Events within the Brivo system may also trigger reactions within the Eagle Eye Networks system.

DESIGN
 The design is based around displaying high definition content such as static presentation as well as videos. The intent is to support video content resolutions that are just becoming commonplace within the marketplace and will become standard in the near future.



A large format wall mounted flat screen display located at the headwall is connected to the Audio/Visual distribution system and cable television system. Presenters will connect their own device to the wall mounted display connections within the table top cubbies. The wall mounted touchscreen controller provides control for all audio-visual equipment in the conference room.

The Hatchery Technology Brief (con't)

4. CONFERENCE ROOM AUDIO/VISUAL SYSTEM: OFFICE STRUCTURED CABLE PLAN

OPTIONAL DESIGN
Overhead loudspeakers are recommended for a room of this size to ensure that any video being displayed within the room is adequately supported by the sound reinforcement system. If video teleconferencing functionality is necessary to enhance the functionality of the conference room, it is recommended that microphones also be installed.

**7\"/>

- Power over Ethernet allows the touchpanel to receive power and communication over a single Ethernet cable, eliminating the need for a local power supply
- Light sensor adjusts screen brightness as the ambient room lighting changes
- Built-in speaker with improved audio performance**

90W In-wall AV Touchscreen Controller

**90\"/>

- Accommodates one Series/2 AC or AC+USB Power Module, plus six Retractors, eight AV cables, or four AAP Architectural Adapter Plates
- Patented modular design for fast assembly and serviceability
- Optional Retractor cable retraction system supports most AV and data signal types**

NOT FOR CONSTRUCTION

**90\"/>

- Display is controlled by touchscreen controller
- Decorative AV Receiver mounted behind television
- Connected to CATV
- Display will be specified by the architect unless**

T1.0A

THE HATCHERY: A SUSTAINABLE FOOD INCUBATOR

INFORMATION TECHNOLOGY SYSTEMS BRIEF db|HMS

THE HATCHERY:
A SUSTAINABLE FOOD INCUBATOR

6 APPENDIX:
PRODUCT INFORMATION

db|HMS

PRESENTATIONS

General

Each deck was created using Google Slides or PowerPoint to develop original templates, then incorporated relevant imagery.

- Thoughtful Automation
- Cosmedent

Thoughtful Automation

PROJECT: Corporate retreat presentation, agenda and welcome card
 SOFTWARE: Google Slides - 10 slides, InDesign, Photoshop
 COMPONENTS: Graphics, writing, imagery, process chart
 BRANDING: Based on Corporate guidelines

December US Employee Retreat // Mexico City

HIGH LEVEL AGENDA

Thurs 12/9	Fri 12/10	Sat 12/11	Sun 12/12
Arrivals / Check-in (3pm) Dinner on your own 9pm: Welcome drinks The W lobby bar	9am-6pm: Team Meeting at The W 6-8:30pm: Break 8:30pm: Meet in Lobby to talk to dinner 9pm: Dinner at Rosa Negra	Breakfast on your own 1pm - 6pm: Day Trip to Xochimilco Boat Tour 6pm: COVID Test 6-8:30pm: Break 8:30pm: Meet for 9pm: Dinner at Merotoro	Meals on your own Departures / Check-out (1pm)

December US Employee Retreat // Mexico City

KNOW BEFORE YOU GO

- COVID Protocol
- What to Pack / Attire
- Safety/Health
- Sightseeing/Restaurants
- Waiver/New Expense System!

*A detailed agenda will be sent out by EOD that includes confirmation numbers, transportation details, contact information and calendar invites for each event with address information.

December US Employee Retreat // Mexico City

KNOW BEFORE YOU GO

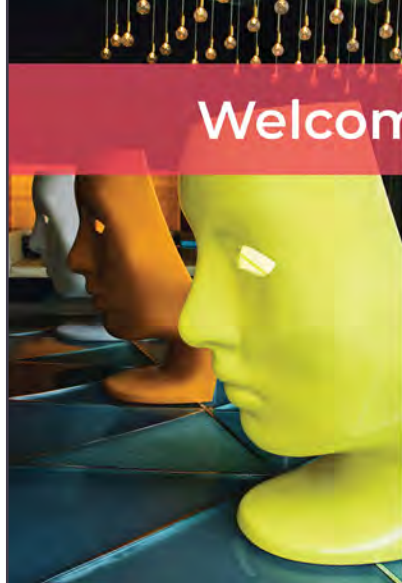

- COVID
 - We will be taking a group COVID test at 6pm on Sat to get back into the US
- Weather / Attire
 - 70's during the day, high 50's at night
 - Casual, but slightly dressy for dinner (no shorts/ flip flops)
 - Non-slip shoes and layers for Sat (maybe a rain jacket)
- Logistics
 - CDMX is on central time
 - Mexico uses the same chargers as the US

Welcome to Mexico City!

We are thrilled to bring the US team together to align on goals, discuss our vision and values and celebrate a kick-ass 2021!

Let's use this time we all have together in person to build connections and have some fun!

Your captains,
 Alex, Dan, and Chris.

Thoughtful Automation (con't)



Welcome to Mexico City!

Thoughtful Automation
Retreat 2021

Agenda

Thursday, December 9th

- Arrivals + Hotel check-in
- Dinner on your own
- 9pm // Welcome drinks at The Living Room - W Hotel lobby bar

Friday, December 10th

- 9am - 6pm // Team Meeting | The W Meeting Room - Great A
- 6pm - 8:30pm // Break
- 8:30pm // Meet in W Hotel lobby to walk to dinner
- 9pm // Dinner at Rosa Negra

Saturday, December 11th

- Brunch on your own
- 12:30pm // Meet in W Hotel Lobby for bus pick up to day trip activity
- 1pm - 6pm // Xochimilco Boat Tour Excursion (COVID test when we get back to The W)
- 6pm - 8:15pm // Break
- 8:15pm // Meet in W Hotel Lobby for bus to dinner
- 9pm // Dinner at Merotoro
- 11pm // Bus back to W Hotel Lobby

Sunday, December 12th

- Departures / Hotel Check-out

We hope you enjoyed the retreat. Safe travels back home!



While you're here

Thoughtful Automation
Retreat 2021

HOW TO NAVIGATE MEXICO CITY

Weather / Attire

- Avg temps are 45-50 at night, 68-72 during the day
- Dinners: Casual, but no shorts/flip flops at dinner
- Sat Outing: Wear layers, bring a sweater and non-slip shoes (and pack a light rain jacket in case it rains)

Dining / Sightseeing

- Take advantage of your free time and check out Mexico City!
- Nearby restaurants
- Restaurants in the W
- Sightseeing

Currency

- Use a credit card where possible but it's always good to have a few pesos, taking out from an ATM in Mexico is probably best
- Tipping 10% at restaurants is customary

Logistics / Transportation

- The W Hotel Mexico City Address: Campos Elíseos 252, Polanco, Chapultepec, Miguel Hidalgo, 11560 Ciudad de México, CDMX, Mexico
- Transportation to/from the airport is on your own unless otherwise pre-booked with Lacey
- Don't take taxis from the street, stick to official cab stands like those at the airport, or take Ubers wherever you go.

Safety

- Don't drink tap water and be careful eating at obscure places to avoid food poisoning.
- Stay in groups at night.

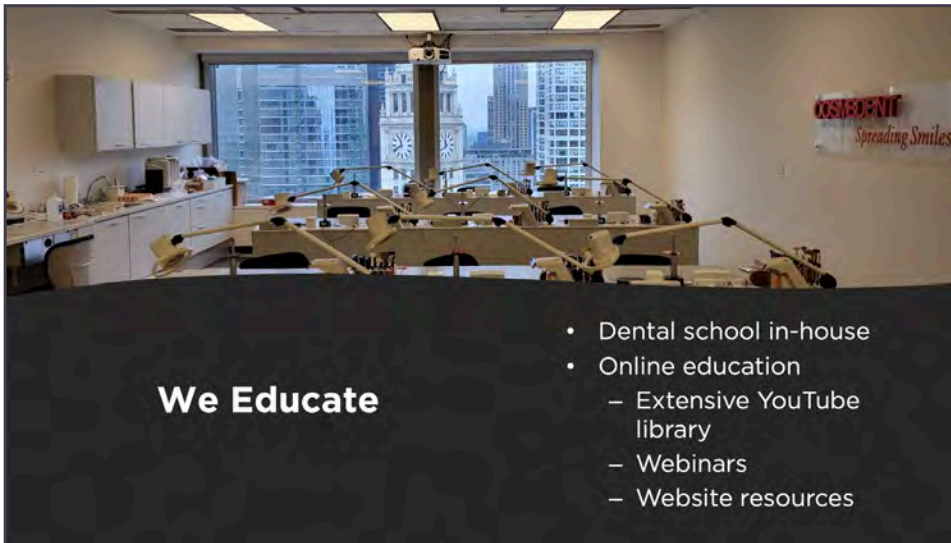
Cosmedent

PROJECT: Corporate firm profile

SOFTWARE: PowerPoint - 425 slides, Premiere Pro

COMPONENTS: Graphics, imagery, video editing, animations, transitions, internal hyperlinks

BRANDING: New based on Corporate guidelines



We Educate

- Dental school in-house
- Online education
 - Extensive YouTube library
 - Webinars
 - Website resources

Smaller particle size
Superior handling
Increased polishability
Maintains polish long-term
Easier to marginate
More stain & plaque resistant
More biologically compatible
Better wear-resistance
Better refractive & reflective index
More realistic translucency
More Flexible

MICROFILL
More closely simulates enamel

**RENAMEL
MICROFILL**

SOLVER

**RENAMEL
MICROFILL**

Renamel Microfill is an esthetic composite resin material that should be used anywhere you want to replace enamel. Just like natural enamel, Renamel Microfill dental composite gives you the best polish, long-term color stability and natural translucence.

WHY RENAMEL MICROFILL?

- The only composite that truly mimics the enamel surface
- Long-term wear resistance
- Total color stability
- Long-lasting, high polish
- Most lifelike translucence of all composites
- The highest rated composite in dentistry

RENAMEL MICROFILL
polishes like glass

"The polishability of Microfill is amazing, and it maintains its luster for many years. My patient was really impressed also."

— Mark J. Johnson, DDS, Edina, MN

Composite Physical Properties

PHYSICAL PROPERTY	RENAMEL NANO	RENAMEL MICROFILL	RENAMEL MICROHYBRID	RENAMEL FLOWABLE MICROFILL	RENAMEL FLOWABLE MICROHYBRID	RENAMEL POSTERIOR	COSMECORE	INSURE	INSURE LITE AUTOMIX
Particle size range, μm	0.04-3	0.04	0.04-3	0.04	0.04-3	0.04-5	0.04-5	0.04-3	0.04-3
Particle size, mean μm	0.7	0.04	0.7	0.04	0.7	0.7	0.7	0.7	0.7
Filler percentage by weight	80	70	75	55	65	77	70	73	65
Filler percentage by volume	64	60	56	39	45	61	49	51	42
Compressive strength, MPa	566	380	390	3450	390	390	300	330	310
Modulus of elasticity, MPa	11600	4600	8700	4400	6400	12500	9600	8900	7000
Flexural strength, MPa	92	80	140	300	130	140	140	130	100
Tensile strength, MPa	46	45	49	45	49	50	48	48	39
Vicker's hardness, VHN	54	30	56	50	56	65	52	40	39
X-ray opacity, % AI	155	0	160	0	117	178	165	180	160
Water sorption, $\mu\text{g}/\text{mm}^3$	0.67	1	21	1	1	1.8	0.4	0.5	0.5
Water sorption, $\mu\text{g}/\text{mm}^3$	21.2	15	15.2	20	17	12.2	12.8	14	16
Polymerization shrinkage, %	2.48	1.0	2.5	--	--	2.8	4.1	--	--

SALES PITCHES

Each pitch was created using InDesign with some Photoshop. Original and existing content were merged and customized into client- and project-specific information.

Acting as Creative Project Manager, producer and primary contributor, I led teams that would be working on each project to provide specific content for each opportunity, such as architectural renderings and technical writing.

- MEC
- L'Oreal
- Promega
- GPCC

MEC

PROJECT: MEP master development services for a joint venture on an office building project

SOFTWARE: InDesign, Photoshop

COMPONENTS: Firm info, org chart, resumes, projects, scope of work

BRANDING: Corporate branded collateral customized for client



WEC-PGL/NSG
MCKISSACK PASCHEN JOINT VENTURE

RESPONSE TO RFP FOR MASTER DEVELOPMENT SERVICES:
Mechanical, Electrical, Plumbing & Fire Protection Engineering
August 18, 2017

db | HMS

303 W Erie St | Suite 510 | Chicago, IL 60654 | 312.915.0557 | www.dbhms.com



2017 BD+C GIANTS RANKINGS
TOP ENGINEERING FIRMS OVERALL:
50 out of 60

FIRM INFO



Year	# of Employees	# of New Projects	# of LEED Projects	# of New Clients
2002	410	21	0	16
2004	714	47	27	143
2008	2714	143	28	113
2009	3616	167	73	32
2011	5815	167	110	39
2014	6813	167	176	29
2015	6813	167	183	13
2016	8513	167	183	13

4



MEPFP, LIGHTING + IT / SECURITY / AV DESIGN



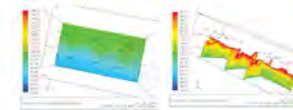
ENGINEERING INSPIRATION

dbHMS

PROJECT MANAGEMENT

Every project has its own unique challenges. To smoothly guide each project to successful completion, one of our principals is constantly and closely involved in design, development and implementation. It is key to our philosophy that parameters are set precisely at the start of each project. Our principals personally coordinate work with technical staff and the client's representatives to ensure quality. To control quality, independent members of our staff validate work as it progresses.

In addition to mechanical, electrical, plumbing and fire protection design, dbHMS offers the following services for a variety of facilities:



COMPUTATIONAL FLUID DYNAMICS

CFD is the most sophisticated airflow modeling method available, simultaneously predicting airflow, heat transfer and contaminant transportation in and around building spaces.



DAYLIGHTING ANALYSIS

Through targeted studies, we can model a design to harvest daylight utilizing strategies such as dimming controls and light shelves.

BUILDING SYSTEMS & ENCLOSURE COMMISSIONING

Commissioning (Cx) is a quality-focused process for enhancing the delivery of a project. Our commissioning agents will lead the process of verifying that the facility and all of its systems and assemblies are designed, installed, tested, operated, and maintained to meet the owner's project requirements. Commissioning work saves owners money through equipment that functions as designed, occupants who are satisfied and building operators who are informed and well trained.

dbHMS' Building Enclosure Commissioning (BECx) Authorities augment the roles of the architect, builder and system specialists by reviewing designs, inspecting work performed, and testing the installed systems to verify that construction conforms to codes and performance expectations.

ADVANCED ENERGY MODELING & BUILDING SIMULATIONS

dbHMS has prioritized and valued building performance modeling since its inception. Each project goes through some level of advanced simulation modeling fulfilling our company vision to "leaving a legacy of stewardship and innovation through our impact on the built environment". That culture of stewardship, innovation, and quality manifests itself in the High Performance Design Studio at dbHMS that performs the modeling and simulation work, as well as the feasibility studies and assessment reports.

SUSTAINABILITY & LEED CONSULTING

We urge our clients to start LEED consulting and integrated design early for the highest saving potential. As LEED consultants, we can facilitate the eco-workshop, a one-day meeting of all of the project stakeholders to forge a strategy for achieving LEED certification and the owner's sustainable goals. With over 180 LEED projects around the world, we have a proven track record in guiding the process. Our work as a third-party reviewer for the USGBC LEED program gives us the greatest understanding and insight to the LEED process. dbHMS has been recognized as a LEED Proven Provider™ for the Building Design and Construction rating system family by Green Building Certification Inc. (GBCI®), and has performed over 1,500 reviews to date.

INFORMATION TECHNOLOGY DESIGN | LIGHTING DESIGN

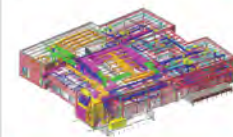
We provide specialty IT/AV/Security and Lighting design services for architects, interior designers, and owners. Information Technology design services include: structured cabling, access control and intrusion detection, video surveillance, two-way/emergency communications and audiovisual systems. Lighting design services include: lighting layouts, fixture selections, lighting fixture schedules, specifications, lighting calculations, site visits, energy analysis and compliance, emergency layouts, controls, aiming and adjustment.

OUR GOALS

- To incorporate the latest in cost-effective technology into design and construction
- To provide expert, energy-conscious, environmental design services to the architecture industry and embody the philosophy of "green" buildings
- To provide professional service for reasonable compensation
- To be completely open and fair with our clients while helping them prosper
- To focus on quality and timeliness of service, and to pro-actively respond to the needs of our clients



H&M Warehouse, Burlington Building One | Burlington Township, NJ



Systemic Integration



ComFed Training Center | Elkhart, IN

A COMMITMENT TO PROVIDING VALUE INSTEAD OF NUMBERS

All engineering firms have access to the same set of software tools with which to perform building analyses. The strength of dbHMS comes from the people who use these tools and the firm culture that recognizes the value that people bring to the exercise. The dbHMS team includes individuals from different education, ethnic, and gender backgrounds to produce a dynamic, innovation-focused dynamic that provides maximum benefit to our clients. By including individuals with architecture, structural engineering, energy engineering, process engineering, mechanical engineering, and building operations backgrounds, we approach a question or problem with multiple points of view arriving at a set of recommendations that best suit our clients' needs.

The size, depth, and breadth of our MEPFP design, High Performance and Sustainability studios and other resources within the firm mean our clients get the optimal service they need. When project have tight deadlines and turnarounds, we have the capacity to scale up, and when projects require more specific analysis, dbHMS has the right individual ready to go. To make sure this works, each studio at dbHMS has a focus on resiliency – every task we need to perform has a minimum of two people within the firm ready and able to do it.

Through a sense of **urgency**, a focus on **resiliency**, and a culture of **quality**, dbHMS delivers value to our clients with our analysis, not just numbers on a page.



Sachin Anand



Eric Petzer



David Siegel



Hal Ogle



Craig Martes



Kaci DeLong



Joseph Clark



Claudia Mattison



Hal V. Ogle

P.E., LEED AP, CxA

Technical Director, Electrical Engineering / Lighting Design
Senior Electrical Engineer

PROFILE

Hal Ogle has over 20 years' experience in the design and production oversight of large multidisciplinary MEP projects with construction budgets ranging from under \$1M to over \$1B. He is adept at establishing philosophies and procedures structured to create collaboration through increased understanding of, and proactive coordination with, client values, goals.

Hal's continuous refinement of electrical system design standards and practices for various construction methods have allowed him to devise and execute discipline specific Design Quality Management Plans, establishment and implementation of QMPP procedures, and manage performance of QC reviews of construction documents.

This experience translates into the oversight of project construction including participating as an on-site electrical engineering representative, evaluating shop drawings and substitution requests, responding to Requests for Information and Change Order Requests, performing site observations and subsequent field reports, coordinating with contractor activities in works to specific job site challenges, and handling the resolution of pay applications against work completed by contractors.

COMMITTEES

IESNA Committee on Lighting Commissioning
Summit MEP Marketing/BD Leader - Denver
Designers Lighting Forum Board of Directors
MKK Consulting Engrs. Leadership Council
IESNA Member

SELECTED PROJECT EXPERIENCE

COMMERCIAL + OFFICE

LIDL Distribution Facilities & Templates - Natick/Wilkin
Botanical Research Institute of Texas, Research Facility - Fort Worth, TX
Baylor Research and Innovation Collaborative Planning - Waco, TX
Start Bus Maintenance Facility and Transit Center - Jackson, WY
New Dawn Assisted Living Centers - Colorado Statewide
Chinese Cultural Center - Phoenix, AZ
TOSCO Southwest Headquarters - Phoenix, AZ
NREL RSF Parking Structure and South Entrance Facility (NZEB) - Golden, CO
717 North Michigan, Retail Infrastructure Renovation - Chicago, IL
1515 Webster Office Building - Chicago, IL
JC Penney, Retail Anchor Stores - Nationwide
Scottsdale Gateway II Office Complex - Scottsdale, AZ
Skyline Cinema Expansion - Dillon, CO
Marasco Dialysis Centers - Colorado, Arkansas, Missouri
Guiyang Cultural Center Orchid Tower (Super Tall) - Guiyang, Guizhou, PRC
Guiyang World Trade Center Complex - Guiyang, Guizhou, PRC
Kula Belgrade - Belgrade, Serbia
Park Hyatt Riyadh - Riyadh, Kingdom of Saudi Arabia

EDUCATIONAL

State of Arizona K-12 Technology Improvement Program - Statewide
Tarrant County College District Downtown Campus - Fort Worth, TX
Thunderbird JAGSIM Campus - Chandler, AZ
Arizona State University - Tempe, AZ
Northern Arizona University - Flagstaff, AZ
Colorado State University Durrell Center Renovation - Fort Collins, CO
University of Colorado Boulder Kittredge Complex Renovation and Expansion - Boulder, CO

EDUCATION

Bachelor of Science in Electrical Engineering
University of Texas at Arlington, 1983

PROFESSIONAL AFFILIATIONS

Registered Professional Engineer, AZ
CO, TX, WY

LEED Accredited Professional

Certified Commissioning Authority
(CCA)

REGISTRATION & CERTIFICATION

National Council of Examiners for
Engineers and Surveying (NCEES)

E-MAIL

hogle@dbhms.com



INTRODUCTION

This document will outline our approach to provide MEPFP design services to work with MPJV and their team to implement the Master Plan developed for the People's Gas & Light /North Shore Gas facilities. We have read the RFP with care; this approach reflects our understanding of the RFP and the tasks that we are proposing to undertake. It will detail tasks, procedures, schedules and deliverables for Phase I Elements. Also, general information will be given regarding Phase II.

dbHMS will serve as the MEPFP subconsultant for the project and provide all coordination of those services between MPJV and Epstein. The approach aligns with dbHMS' goals for the project - deliver the most innovative design within the owner's budget without taxing the owner's resources. MPJV seeks experts to guide it through this process, and as such, the successful team should add value to the process, not just manage it. dbHMS will add value.

Our approach and methodology described here is specific in regards to Phase I services. For each of the seven projects we will appropriately size a team and develop processes to best execute the required services. The following summarizes our approach and work process, as we see it now, to achieve the goals of MPJV.

OVERALL APPROACH + ORGANIZATION

TEAM ORGANIZATION

A single project manager will support MPJV as the point-of-contact for this venture, minimizing the opportunity for costly miscommunication and maximizing WEC and MPJV efficiency. Depending on the size of the individual projects underway, we may have two sub-teams working if two large projects are proceeding simultaneously. However, we prefer to service the projects with one team that moves sequentially through each one and develops a smooth working relationship with the JV. Please see the organizational chart on p.10 for more specifics.

COMMUNICATIONS

dbHMS will issue formal minutes of all meetings and review with the MPJV project manager to ensure efficacy of communication. In addition, dbHMS will make no deviations from the design scope depicted in documents or provided in the RFP without specific, written direction from MPJV. All deliverables will go through a rigorous internal review at dbHMS, as well as a detailed review with MPJV prior to formal release.



THE UNIVERSITY OF CHICAGO Facilities Services Building



PROJECT LOCATION

Chicago, IL

PROJECT TYPE

Sustainable
Educational

PROJECT INFORMATION

OWNER:
University of Chicago

AREA:
86,000 sf

CLIENT:
McShane Construction

dbHMS SCOPE:
Design Build Transfer Package
Energy Modeling
LEED Documentation

LEED:
Gold

PROJECT COMPLETION:
2015

dbHMS PERSONNEL:
Sachin Anand
Ben Rubach
David Siegel
David DeBord
Guamir Zhang

The Facilities Services building is a new 86,000 sf facility for The University of Chicago located just north of the Hyde Park campus. The new building houses 125 University employees working in the trade shops, landscaping and inventory departments. The two-story facility includes a loading dock with receivable and shipping areas, as well as carpentry, steel, residential and landscaping shops and 2,550 sf of retail space. Sustainable features of the building include a geothermal heat pump system and green roof.

The project was originally pursuing LEED Silver certification, but was able to achieve LEED Gold certification through energy-efficient processes and technologies.

L'Oreal

PROJECT: Architectural and MEP services for an office building project

SOFTWARE: InDesign, Photoshop

COMPONENTS: Firm info, resumes, projects, scope of work

BRANDING: Corporate branded collateral customized for client

*Some cross-office links are broken resulting in blurred imagery

BEYOND SKIN DEEP



2 | Experience & References

2 | Experience & References

4.1 Please provide a comprehensive list of all similar projects your office has been involved in over the last three years.

Advisory Board Company | Worldwide

Construction Cost Varies | Size 9,000 – 50,000 sf | Duration Ongoing

SmithGroupJJR has been providing Advisory Board Company (ABC) programming and design services to transform their offices worldwide into vibrant, modern and efficient workplaces. The company has been growing dramatically in recent years, and needed spaces that allowed their staff to work collaboratively. SmithGroupJJR implemented team-focused “neighborhoods” with open bench workstation, open meeting spaces, lounge spaces, and varying sizes of huddle rooms. The first office transformed was in Chennai, India, followed by Austin, Texas; Washington, DC; Nashville, Tennessee; San Francisco, California; and Portland, Oregon. The Chicago, Illinois office is currently underway.



Astellas US LLC North American Headquarters | Glenview, Illinois

Construction Cost Confidential | Size 420,000 gsf | Duration 2008 - 2012

SmithGroupJJR was selected as the programmer for the company's North American headquarters. The new 420,000 gsf state-of-the-art facility is home to the firm's research and development, marketing and sales, and corporate administration functions. The highly flexible, active environment features a large centralized lobby with a secured entrance that serves as a double-high single level bridge connector, controlling access to private offices and workstations on the upper floors of the building. The lobby also controls access to a Conference Center with large dividable multipurpose rooms and an auditorium, a full-service cafeteria, a private fitness center and below grade structured parking.



Chamberlain Group Corporate Headquarters | Oak Brook, Illinois

Construction Cost Confidential | Size 223,000 gsf | Duration 2014 - 2017

A new corporate headquarters for The Chamberlain Group, the world's largest manufacturer of residential and commercial door operators, access control products, and gate openers, will transform a 20-acre site into an adaptive and flexible campus that supports the firm's strategic relocation and growth plans. The consolidation of employees to one campus will bring together the dynamic talent of the company's employees and encourage innovation supported by technology, training and work environment, and sustainable practices. The facility will feature state-of-the-art engineering and testing laboratories as well as conference and training centers for customized employee and vendor education.



2 | Experience & References

5.1 Provide specific project references broken down into: (a) Recent interiors experience (within the past two years), and (b) Client References.

Project	Services	Team/Contributors	Reference
Argonne National Laboratory Advanced Protein Characterization Facility Argonne, Illinois	Programming Lab Planning Architectural Design Architecture Interiors	Andy Vazzano Victor Cardona	John Busch, Program Manager Argonne National Laboratory 9700 S. Cass Avenue, Building 214 Argonne, IL 60439 T: 630.252.3515
Exelon Headquarters Baltimore, Maryland	Interior Design Sustainable Design	Rob Moylan Chris Smialek	Jennifer Olson, LEED AP, Principal KGC Project Management 1425 K Street NW, Suite 240 Washington, DC 20005 T: 202.719.0452
Graham Holdings Arlington, Virginia	Programming Interior Design	Rob Moylan Chris Smialek	Jeffrey Ebe, VP Global Real Estate Kaplan Group 395 Hudson Street, 4th Floor New York, New York 10014 T: 212.492.5923
Loyola University Health Sciences Center Center for Translational Research and Education Maywood, Illinois	Programming Lab Planning Laboratory Fit-Out	Andy Vazzano Victor Cardona Lee Fitzgerald	Richard Kennedy, PhD Sr. Associate Dean, Research and Graduate Programs Loyola University Health System 2160 S First Ave. Maywood, Illinois 60155 T: 708.216.8434
Noblis Headquarters Reston, Virginia	Programming Interior Design Sustainable Design	Rob Moylan	Mark A. Smith, Director of Real Estate Noblis, Inc. 3150 Fairview Park Drive South Falls Church, Virginia 22042 T: 703.610.2000
University of Michigan Biological Sciences Building Ann Arbor, Michigan	Lab Programming Lab Planning Architecture Interiors	Victor Cardona Lee Fitzgerald	Scott Wood, Senior Project Manager University of Michigan, Ann Arbor Architecture and Engineering Services 326 E. Hoover Ann Arbor, Michigan 48109 T: 734.647.1329

3 | Project Team

SmithGroupJJR is a multi-disciplinary, full-service design firm that provides integrated architecture and engineering. Additionally, our firm has the capacity to provide specialized services such as energy modeling, lighting design, building envelope analysis and thermal modeling in-house. With nearly all services delivered under one umbrella, project communication and coordination is greatly enhanced. Because our firm is fully integrated, we prefer to work in a holistic manner, taking in multiple perspectives to determine the best solutions.

SmithGroupJJR invests significantly in on-going research with our clients. Their perspectives inform our design and forward thinking workplace and laboratory innovation. SmithGroupJJR leads the industry with proactive approaches to new and renovated facility design. Through initiatives like our Lab 2030 survey and valuable insights from our Science and Technology and Workplace Advisory Boards, we examine emerging trends and establish new metrics for what laboratory and workplace environments can accomplish. We create more effective spaces, increasing productivity and trans-disciplinary collaboration.

SmithGroupJJR's approach for the programming of the L'OREAL Research and Innovation campus is methodical and deliberate, but our process is engaging and dynamic. We understand the time constraints and want to highlight our belief that the success of this project relies on the initial investment the entire team makes in establishing the project parameters and understanding the vision that L'OREAL has for its new environment. Our goal is to inspire the spirit of possibility and draw it out from all levels of your organization. The proposed team will be based and managed from our Washington, DC office and augmented by select national experts in this building type, including a nationally renowned Workplace Strategist who is expert at shaping design during the earliest stages of conception in order to strengthen organizational performance and build business success is the ultimate goal. We have committed a highly skilled leadership team to facilitate an interactive and exploratory process with L'OREAL stakeholders. We will work closely with L'OREAL to identify, select, customize, and utilize the appropriate analytical tools to create a unique solution for L'OREAL.

L'ORÉAL LEADERSHIP

OUR TEAM

Andy Vazzano
Principal in Charge

Rob Moylan
Interior Programming Lead

Victor Cardona
Lab Programming Lead

Don Posson
Engineering/Sustainable Design

Chris Smialek
Project Manager

Merrill St. Lager-Demian
Master Planning/Zoning

Lee Fitzgerald
Lab Equipment Programming

Sara Lappano
Engineering

ANDY VAZZANO, FAIA, NCARB, LEED AP Principal in Charge



Education
Bachelor of Architecture
University of Detroit

Certifications
Registered Architect
Illinois
Louisiana
New York
Tennessee

National Council of Architectural
Registration Boards

LEED Accredited Professional

Technical Expertise
Experienced Project Leader
Lab Planning and Programming

References
Richard Kennedy, PhD, Sr. Associate
Dean, Research and Graduate Programs
Loyola University Health System
T: 708.916.8434

Stephen Clinton, Assistant Director
University of Louisville
T: 502.382.6176

Bill Rubin, Director of Architectural
Services
U.S. Environmental Protection Agency
T: 202.364.2163

Andy Vazzano is SmithGroupJJR's Corporate Practice Leader for Science and Technology, with extensive experience in the planning, programming, and design of research and clinical laboratories, academic facilities, and hospitals. He has been recognized as a national leader in healthcare and research lab planning and design, and the inspiration for the SmithGroupJJR research project, Lab 2030. Andy was elevated to Fellow by the American Institute of Architects (AIA) in 2003. He is the recipient of the Henry Adams Award of Excellence in Architecture and has received over 25 national and regional architectural awards. A frequent past presenter at Tradelines, Andy shares his knowledge of architectural design by lecturing at industry symposia, conferences, and seminars, and has actively published articles on health and lab planning in national AEP publications.

Argonne National Laboratories,
Advanced Protein
Characterization Facility,
Argonne, Illinois
Lab planning and design for 55,000-
gsf research facility that includes
specialized laboratories for Structural
Genomics and Systems Biology with
full integration into a highly sustainable
design solution. LEED Gold. Principal-
in-Charge.

Loyola University Health
Sciences Center, Center for
Translational Research and
Education, Maywood, Illinois
Programming, lab and vivarium
planning, fit-out and civil engineering
services for a 226,565 gsf new
Translational Research and Education
building at Loyola University. The
facility will be an integrated research
and teaching facility to augment the
bench-to-bedside effectiveness created
by collocating basic sciences discovery
with clinical research. Targeting LEED
Gold. Principal-in-Charge.

Environmental Protection
Agency, Nationwide Master
Plan, Various
Comprehensive planning exercise for
all EPA laboratory space nationwide.
Evaluation of lab facilities in an

effort to consolidate and backfill or
relinquish remaining space. Principal-
in-Charge.

University of Illinois at Urbana
Champaign, Electrical and
Computer Engineering Building,
Champaign, Illinois
The new 230,000 gsf LEED (Platinum)
(targeted) facility for the Electrical and
Computer Engineering Department
will make a distinguished visual
statement about the international
status of the ECE Department. The
ECE Building will integrate instruction
and research with state-of-the-art
laboratories that reflect the full diversity
of present instruction, flexible enough
to meet future needs. Principal-
in-Charge.

BASF Bioresearch Corporation,
Biomedical Research Center,
Worcester, Massachusetts
State-of-the-art 371,900 gsf research
center focuses on both pharmaceutical
research and development, and
biotech research and development
in the fields of biochemistry, cell
culture, microbiology, cell biology
and supportive chemistry, process
development, and animal research
laboratories. Planning Principal.

ARGONNE ADVANCED PROTEIN CHARACTERIZATION FACILITY

Argonne, Illinois

SmithGroupJJR recently completed the new Advanced Protein Characterization Facility (APCF) for Argonne National Laboratory. The new APCF facilitates the modern advancements in biological research, which the previous facility could no longer support the function of this program. This building, which is LEED-NC Gold certified, provides a world class facility for research and biological studies.

The character of existing Argonne buildings are one of highly specific programs, bundled to support the unique functions of each building; and the new APCF will be no different. As a physical connection through a link to the Advanced Protein Source (APS), as well as a programmatic connection of protein characterization research, the APCF creates additional space and support for these programs. This center will support both structural genomics and systems biology as the two main programs. In addition to the labs there are collaboration spaces, open and closed offices, green roof elements for outdoor gathering and administration, all to support the building and staff.

During the planning and programming phases, Victor Cardona and team met with the three main user groups within APCF to address the needs of each. It was determined that a modular layout of 11 feet by 20 feet best suited the unique space types for the program. Once determined, the team began the detailed and crucial process of validating room guide plates and data sheets with the users. This included detailed discussions about the specific space characteristics from open versus closed labs to generic versus specialized space to flexible versus optimized areas. The result was that both structural genomics and biology require highly specific spaces while other department areas must react appropriately and easily to the science happening within, allowing scientists to take their research to new heights. Additionally, the individual closed offices and workstations were designed for privacy, but organized in a manner that will create venues for interaction. To facilitate this, office location within the building, space between the primary researcher and their staff, as well as between various lab researchers became critical part of the planning. As a result, the offices are organized in clusters to promote collaboration while respecting privacy, enhance flexibility, and allow natural light to penetrate deep into the interior spaces of the building.

“ Discoveries arising from this facility will form important contributions to the understanding of systems and structural biology in the fight against infectious diseases. This state-of-the-art facility will provide researchers with the advanced technology and expertise for protein science experiments in Illinois and nation-wide. ”

Andrzej Joachimik, PhD, Director of the Structural Biology Center at Argonne National Laboratory

Relevance to L'OREAL

Lab Programming and Planning
Specific lab types are paired with collaboration space, maximizing in-tandem efforts amongst scientists.

Research and Recruitment
The APCF is attracting world class researchers with its cutting-edge laboratory facilities and direct connection to related sciences via the APS.

Biological Sciences and Chemistry
Discoveries in protein development are facilitated by the layout and design of each lab station in relation to each other and the building as a whole.

Project Statistics

Site
55,000 sf

Construction Cost
\$20 million

Completion Date
2014

Team Members

Andy Vazzano
Principal-in-Charge

Victor Cardona
Lead Lab Programmer and Planner

Lee Fitzgerald
Lab Equipment Planner



Promega

PROJECT: Lab planning services for a science + technology project

SOFTWARE: InDesign, Photoshop

COMPONENTS: Firm info, projects

BRANDING: Corporate branded collateral customized for client



See How We Do It.
Celebrating over 160 years of continuous operation, SmithGroupJJR is one of the largest architectural, engineering, planning and interiors firms in the nation; with 900 employees in 10 offices.

Locations
Ann Arbor
Chicago
Dallas
Detroit
Los Angeles
Madison
Phoenix
San Francisco
Shanghai
Washington, DC

4 www.smithgroupjrr.com

Promega (con't)



Six decades of laboratory planning and design

Drawing on over six decades of laboratory planning and design for many of the country's leading research institutions, SmithGroupJJR creates flexible laboratory environments that help to advance multidisciplinary research in biology, chemistry, neuroscience, genomics, nanotechnology, computer science, advanced materials, pharmaceuticals, and more. At the same time, we actively explore scientific trends and emerging technologies that will shape the concepts and systems for the laboratories of the future.

Our Science & Technology Practice has completed the planning and design of academic, corporate and government research laboratories nationwide, ranging from small laboratory renovations to large research campuses. These advanced facilities must handle a wide range of technologies and scientific equipment, as well as ever-changing user requirements. Flexibility, adaptability, reliability, safety and security all are critical concerns in laboratory design. SmithGroupJJR's innovative design solutions respond to operations, environmental quality, cost and energy management, and systems technology.

Planning and design of more than **25 million square feet** of corporate, academic and government research laboratories worldwide



Seven Lab of the Year Awards and Honors by R&D Magazine



National expertise, collaboration and recognition

Our expertise in laboratory design dates back to the landmark GM Technical Center, which brought together the best minds in design and engineering in the late forties. The National Institutes of Health and a Lunar Receiving Laboratory for NASA took us into uncharted containment technologies in the fifties and sixties. In the seventies and eighties, we had the opportunity to design state-of-the-art research facilities for General Electric, Eli Lilly and Upjohn. In the nineties, *R&D Magazine* named the University of Illinois' Beckman Institute for Advanced Science and Technology "Lab of the Year," just one of seven coveted Lab of the Year awards that SmithGroupJJR would garner. Most recently, in keeping with SmithGroupJJR's leadership in sustainable design, our design for the new Science & Technology Facility at the National Renewable Research Laboratory (NREL) in Colorado received a LEED Platinum rating, the first federal research laboratory to achieve the highest rating in the LEED system.

Today, SmithGroupJJR is on the cutting edge of technology with projects in biomedical/biotechnology, chemistry/advanced materials, electronics, computers, energy and environmental/earth sciences systems research. In 2014, the firm's success at NREL continued as the SmithGroupJJR-designed Energy Systems Integration Facility was named Laboratory of the Year.

Individuals from our national Science & Technology Practice consistently collaborate and work together as an integrated team, within and across studios, to deliver creative and comprehensive solutions to our clients.

Promega (con't)

Plante Moran

Chicago, Illinois



Partnering with global financial firm Plante Moran, SmithGroupJJR created a prototype facility for a new way of working across all of its locations throughout North America; the first 87,000 gsf project completed in Chicago and the second facility underway in downtown Detroit. The Chicago project incorporates a conference center and café on the ground level, with open office space for 350 employees on upper levels, and will serve as benchmark for the eight to ten additional facilities planned.

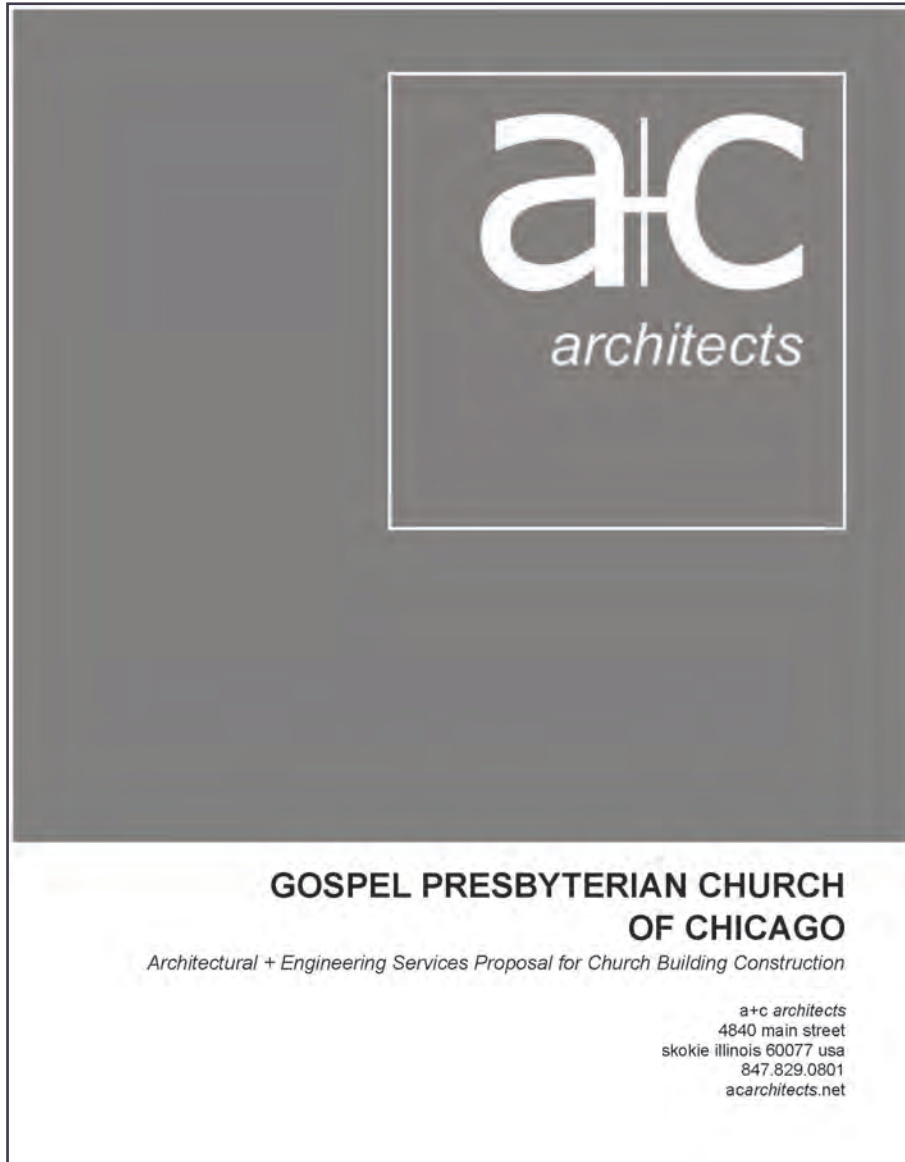
The entire perimeter on the upper floors is open office allowing daylight and views to the maximum amount of people, including those in the offices which have full glass fronts. Exposed ceilings at circulation and backlit tessellated feature ceilings allows for a more dynamic feeling in an otherwise ordered plan and also serves as wayfinding.

Size
87,000 gsf
Construction Cost
\$8.1 million
Completion Date
2014



GPCC

PROJECT: Architecture services for new church
SOFTWARE: InDesign
COMPONENTS: Firm info, resumes, project info
BRANDING: Original corporate guidelines



firm profile



services

- Architecture + Engineering
- Space Planning + Programming
- Site Planning
- Permit Process Management
- Interior Design
- Contract Management

practice areas

- Institutional + Gathering
- Religious Spaces
- Early Education Facilities
- Single Family Residences
- Mixed-use + Multi-family

FOR ADDITIONAL INFO:

847.629.0801
info@acarchitects.net
acarchitects.net | @acarchitects

Perfectionists in practice

a+c architects has over 25 years' experience designing custom architectural solutions for a diverse client base. Our involvement in the communities we serve lends us firsthand insight to design goals for the future. We see our role as not only a technical creator of space, but as experienced consultants with a knack for helping clients realize their vision.

We believe that the most successful projects are those in which **clients are actively engaged** in the design process from concept to construction. We build trust upfront with a casual yet professional demeanor, giving 110% in guiding each client to reach a design that exemplifies their goals.



American Evangelical Church | Mount Prospect, IL

Our designs always follow discussion where we learn firsthand what is important for every client in their daily routine as well as in celebrating, creating and living. We leverage this knowledge with care and diligence to **provide a personal experience** throughout the architectural process. In turn, this translates to aesthetically appropriate, functional spaces that transcend trends. We take what inspires each client and visualize a design that is based on not just their wants and needs, but their world views. a+c architects take the aspirations of individuals and institutions alike and materialize these goals to a custom fit that naturally breeds functional, buildable places.



Keliast L'hovvivi Tsion Synagogue | Chicago, IL

Philosophy

a+c architects designs deliberate, balanced and **meaningful environments** that support our clients' missions. We offer creativity and relationship-based partnerships as the foundation for every project. Our **respect** for each client's time, money, and project goals forges strong bonds that transcend the life of a project. Regardless of project type or scale, we see every design as an **opportunity** to fulfill client goals and fuel our passion for architecture. For the most client-centric solution, we design until it is right.



The Hook 7 Early Education Center | Chicago, IL

Culture of service-oriented design



Elm Romanian Pentecostal Church of Chicago | Chicago, IL

Sustainability plays a critical part in how a+c architects designs. As a member of USGBC, we aim to create a mutually beneficial rapport with the environment where buildings don't dirty, pollute or drain, but instead clean, purify, and inspire. We understand a building's position within the greater context. We recognize its impact on its immediate surroundings and the environment as a whole, and continually work to be responsible stewards of our neighborhoods and our planet. It is with this spirit that we approach projects with not merely an attitude of how we can create a minimal footprint, but rather how can we inspire and motivate behavior within and even beyond the structure.



Services

PRE-DESIGN AND PROGRAMMING

a+c architects works closely with each client to identify, quantify, qualify and define functional architectural relationships as the premise for each project. Our efforts include personalized planning, programming, adjacency studies, scope of work development, project scheduling, budgeting, budget analysis, project management, and both plan and site analysis services. We conduct site visits to take inventory and perform an initial investigation. Then, we review existing resources, regulatory codes, owner design documentation standards, budget, and physical and social constraints. An iterative, collaborative process develops where consensus is built and we design a project that is custom suited to every client's unique goals.

SCHEMATIC AND DESIGN DEVELOPMENT

a+c architects synthesizes information from the pre-design phase and any client-supplied criteria to develop design scenarios that:

- Excite the spirit
- Produce efficient and comfortable solutions
- Respond to environmental and regulatory agencies
- Use owner design standards, preferred systems, and product standards
- Maintain planned construction costs and schedules

Integrating each factor influencing a project, we communicate with the client throughout the design process to ensure the client's goals and ideas are represented. a+c architects refines each schematic design and identifies, resolves and develops all project-specific details. We bring together systems, governing regulatory codes, preliminary cost estimate and construction criteria as required to document the project for construction.

We use the most up-to-date digital tools to create diagrams, study / computer generated models, and other visuals to communicate design concepts. As we continue to design, we include up to 2 presentations to any client-designated groups throughout these phases.

CONSTRUCTION DOCUMENTS AND BIDDING

Following approval, a+c architects translates the developed design into construction documents (drawings and specifications). Our team incorporates aesthetic and technical design criteria jointly, creating construction documents that retain important design principles and establish efficient construction techniques. We then submit the construction documents for governing agencies to review, then resolve issues from the review and assists the contractor with securing proper permits.

During the bid process, a+c architects answer contractor questions, prepares addenda (clarifications for the construction documents), reviews substitutions, attends the pre-bid conference, and refine drawings as needed.

CONTRACT ADMINISTRATION

During construction, a+c architects attends the pre-construction conference and progress meetings while monitoring construction for compliance with the final construction documents. We also resolve unexpected issues and facilitate progress to ensure completion in a timely manner, within budget. a+c architects issue change orders and directives; review alternatives, shop drawings, mock-ups and samples, and monitor payments for completed work. Regular site visits and progress reports as well as meeting agendas and meeting minutes are prepared and distributed (upon owner request). Finally, a+c architects and the project team attend the pre-final inspection and final inspection.

Follow us on social media:
[@apluscarchitects](#)



JOANNA ZYWCZYK PE, ASSOCIATE AIA



PRINCIPAL

EDUCATION

Master of Civil Engineering, Wroclaw University of Technology, Poland, 1979

REGISTRATIONS

Registered Professional Engineer, IL

PROFESSIONAL AFFILIATIONS

Associate AIA

WORK EXPERIENCE

Pracownia Projekt. Walsbrzych, Poland (1996-1999)

a+c architects, Skokie, Illinois (1999-present)

Joanna joined a+c architects in 1999 upon moving to Chicago from Poland, and is responsible for day-to-day operations in the design studio. She oversees the development of construction documents and manages the contract administration process. Joanna's inherent drive for organization and clarity are visible as she oversees all quality control efforts. A licensed civil engineer by training, Joanna began at a+c architects as a project manager and was trained through experience, learning from contractors and eventually becoming Principal.

SKILLS

Architectural Management

- *Institutional:* Churches, community centers & athletic facilities, schools & daycare centers.
- *Commercial:* Corporate headquarters, commercial office buildings, retail stores/shopping centers, restaurants & commercial kitchens, entertainment environments, medical offices, theaters & performance spaces.
- *Residential:* Custom residential, residential remodeling, historic preservation & adaptive reuse, condominium buildings & town homes, mixed-use residential/commercial.

Construction

Full design and documentation responsibility for more than a dozen multi-family, custom residential and institutional projects.

Contract Administration

More than 18 years commercial architectural and construction contract administration experience including review and authorization of payout requests, allocation schedules, and analysis of work completion.

RELEVANT PROJECTS

CULTURAL + SPIRITUAL

Armenian Evangelical Church of Greater Chicagoland | Mount Prospect, IL

8,000 sf sanctuary, multi-purpose community hall, commercial kitchen and 47 parking spaces.

Kehilat Chovevei Tzion Synagogue | Skokie, IL

Two main sanctuaries plus youth sanctuary, classrooms, 300-seat banquet facility and commercial kitchen with 27 parking spaces.



Scope of Work + Fee

PROPOSAL FOR ARCHITECTURAL + ENGINEERING SERVICES

At a+c architects we pride ourselves on knowing how to bring value to our clients. We carefully assess each service proposed and how they will enhance the goals of our clients and their specific circumstances. a+c architects uses a holistic and creative approach to the designs we create. The following content demonstrates our knowledge thus far about the new addition at Gospel Presbyterian Church of Chicago (GPCC), and a comprehensive description and fee for the services we propose to provide.

PROJECT UNDERSTANDING

The 34,000 sf lot currently includes a 840 sf sanctuary with a fire suppression system, full basement, 2-car garage and 16 parking spaces. A 3,200 sf addition is to be built including a hallway connecting to the existing building. It will include a sanctuary, fellowship space, restrooms, kitchen and an office as outlined in the RFP. The building is to be designed with a modern aesthetic and not be taller than 1 story. A total of 34 parking spaces including 2 ADA compliant spaces and proper lighting will be designed to work with the site redesign of a 5,000 sf detention pond.

It is our understanding that there will be no public hearings required by the Village for this project.

CONSULTANTS

We have included the following consultants to comprehensively address the project's needs:

- Mechanical, Electrical + Plumbing Engineering
- Civil Engineer
- Structural Engineer
- Landscape Architecture

SCOPE OF WORK

The following is a general description of the services we typically provide by phase:

DESIGN PHASE: a+c architects will discuss the program, schedule, budget, site requirements, and alternate approaches to the project's design with the client and come to an agreement regarding project requirements. We will consider the relative value of alternative materials, building systems and equipment, together with other considerations

based on program, aesthetics, and any sustainable design objectives in developing a design for the Church that works with the client's schedule and budget.

a+c architects will prepare Design Documents consisting of drawings and other related documentation for the client's approval.

CONSTRUCTION DOCUMENTS PHASE: Based on the client's approval of the design package, a+c architects will prepare Construction Documents consisting of drawings and specifications outlining in detail the requirements to build the project. Shop drawings, product data, materials samples and other information will be provided by the contractor to a+c architects for review. a+c architects will incorporate all governmental requirements for the project. Construction documents will be submitted to the client along with any cost of work adjustment, make modifications as requested by the client, and submit to the client for final approval. a+c architects will request bids from contractors and vendors to perform the services required to build the Church.

CONSTRUCTION PHASE: a+c architects will provide administration of the contract between all parties according to the AIA Document A104-2017, Standard Abbreviated Form.

FEE

For the Gospel Presbyterian Church of Chicago project we propose the following services and fees broken down by option and phase. We have broken out the Civil Engineering fee to allow you to either work with our consultant or seek out additional quotes. Please see the their proposal following this document.

Our lump sum fee is \$XX,XXX. Please see services broken out by phase on the following page.

Profiles / Case Studies / Resumes / Org Charts + Placemats

The following samples are grouped by category. All were created from original branded templates using InDesign, Photoshop and Illustrator.

These deliverables also appear in previous sections as parts of presentations and sales pitches.

Profiles

PROJECTS: dbHMS firm profile, SmithGroup Healthcare brochure, a+c religious profile
 SOFTWARE: InDesign, Photoshop
 COMPONENTS: Graphics, imagery, original content
 BRANDING: Corporate branded collateral

IMPACT THROUGH ENGINEERING

CHICAGO
 PHILADELPHIA
 GRAND RAPIDS
 DELHI
 AHMEDABAD

db | HMS

db | HMS

ENGINEERING INSPIRATION

dbHMS was founded in 2002 on the principles of integrated project delivery and sustainable design. We are a minority-owned business with 125 employees worldwide. Our project approach unites key stakeholders and creative design professionals, letting us work collaboratively to deliver innovative engineering solutions. Our team of consultants provides a full range of services including mechanical, electrical, plumbing and fire protection, lighting and information technology design. We specialize in energy modeling, building commissioning, LEED consulting, computational fluid dynamics (CFD), and daylighting studies.

dbHMS has been recognized as a LEED® Proven Provider™ for the Building Design and Construction rating system family by the Green Building Certification Inc. (GBCI®). dbHMS approaches all projects looking for opportunities to find new solutions to old challenges. All of our teams include a dedicated Project Manager which allows us to engage collaboratively from the beginning, adjust to changes, and deliver a tailored approach to engineered systems. Our commitment to this design philosophy has contributed to buildings we are proud of. These include the world renowned Aqua Tower, a high rise residential development, the Green Exchange, which is the country's largest sustainable business community, and the IGI Airport in New Delhi, India.

MECHANICAL, ELECTRICAL, PLUMBING & FIRE PROTECTION DESIGN

dbHMS creates optimal heating, ventilation, air conditioning, electrical, plumbing and fire protection designs. We are well versed in both conventional and groundbreaking design methods, and have a solid record of performance focused on quality and timely delivery. Additionally, we are on the leading edge in advanced solutions such as ground tube, solar cooling and geo-exchange heat pumps.

INTEGRATED DESIGN

We routinely use an integrated approach to projects, bringing together key stakeholders and design professionals to work collaboratively and interactively from the beginning. The structure, building site, lighting systems, HVAC systems, indoor environment and the end use of the building are viewed as a whole building system rather than a number of separate, independent systems. We work as a full-circle team to understand owners' requirements, help architects on building massing and openings, side engineers in selecting systems, and help contractors to implement proven methods.

PRINCIPALS
 Sachin Anand, PE, LEED AP BD+C
 Victor Avila
 Bin Rubach, PE, LEED AP

ASSOCIATE PRINCIPALS
 Arvinder Dang, LEED AP BD+C, BEMF, HBDP
 Syed Ahmad, PE

LICENSED PROFESSIONALS
 Syed Ahmad, PE
 Sachin Anand, PE, LEED AP BD+C
 Dina Benson, PE
 Joseph Chang, PE, LEED AP
 Arvinder Dang, LEED AP BD+C, BEMF, HBDP
 Rolando Esquivel, PE, LEED AP BD+C
 Claudia Fractmans, PE, LEED AP BD+C
 Alex Goldman, PE
 Yogesh Marwar, PE
 Kizyof Pajarski, AIA, NCARB, LEED AP BD+C
 Eric Pitzer, PE, LEED Green Associate
 Benjamin Rubach, PE, LEED AP
 Roy Swark, PE
 David Siegel, PE
 Aubrey Swift, AIA, CEM, LEED AP
 Rose Winter, AIA, LEED AP BD+C

GENERAL SERVICES

- Design & Commissioning of Mechanical, Electrical, Plumbing and Fire Protection Systems
- BIM
- Technology Design
- Lighting Design
- Sustainable Consulting
- Indiana/Michigan Retro Commissioning Provide
- Design of Refrigeration DCA/Ammonia
- Design of Low-Voltage Systems, Fire Alarm, Building Management, Data, Clock/Bell and Communications
- Energy Modeling, Generation & Conservation Studies

TYPES OF FACILITIES

- Single- and Multi-Family Residential
- Educational
- Commercial / Office / Industrial
- Retail
- Municipal
- Institutional
- Places of Worship
- Cultural
- Medical

SELECT CLIENT LIST

- IRL Architecture, LLC
- Studio Gang Architects
- Ronan Architects
- Solomon Cordwell Buenz
- Fair Associates
- The University of Chicago
- Northwestern University
- University of Illinois
- City of Chicago

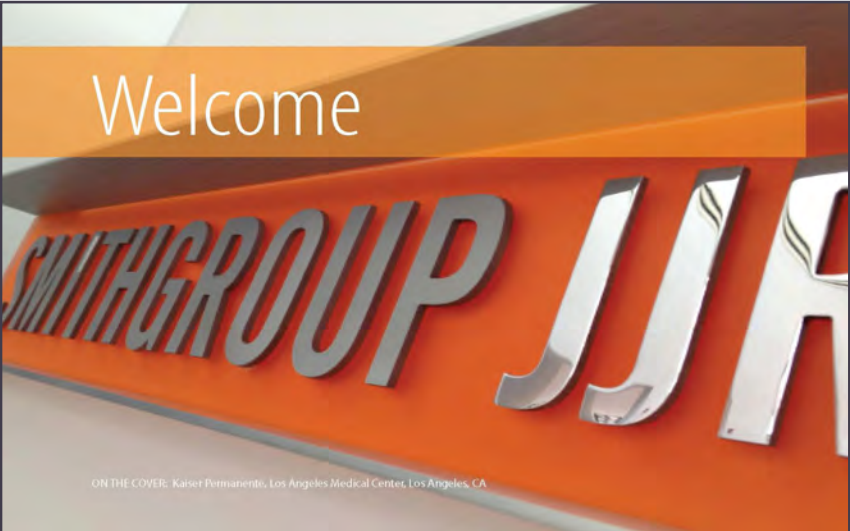
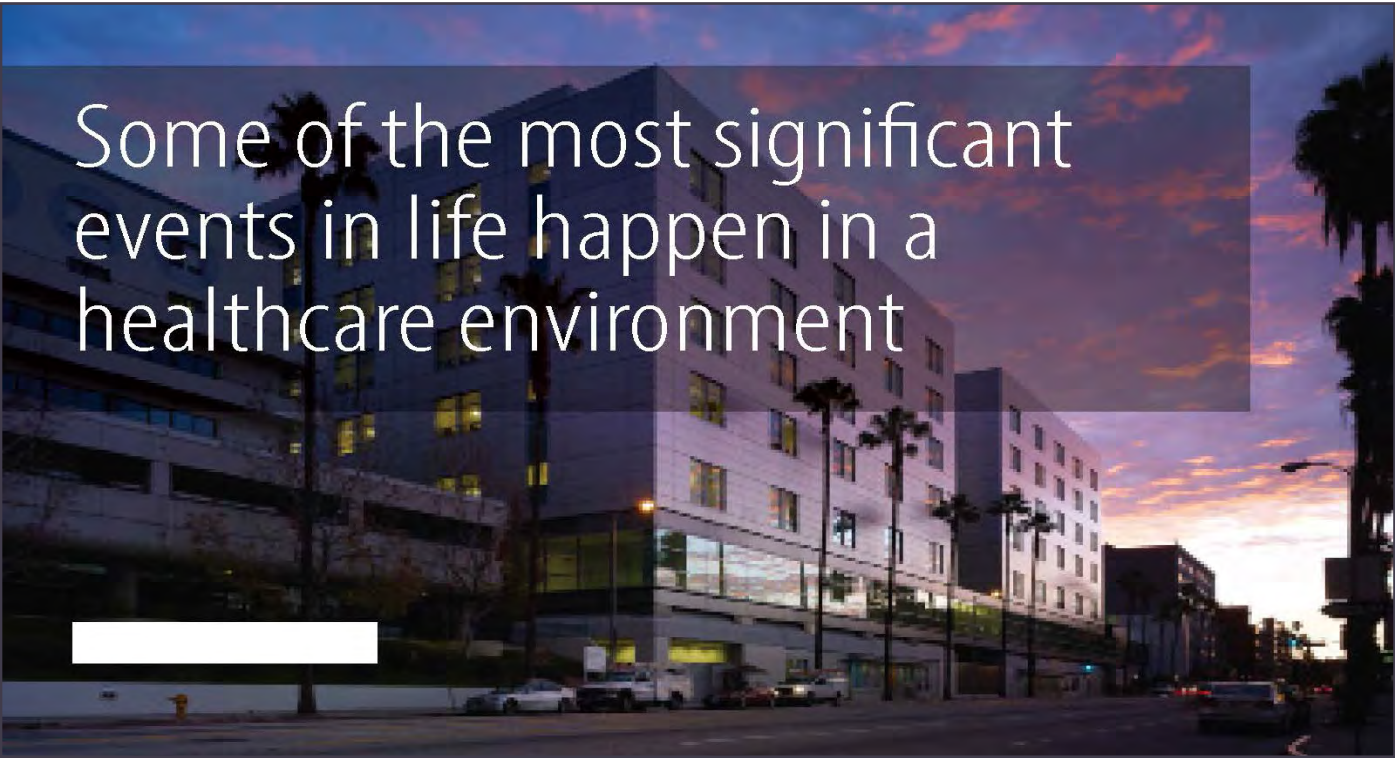
TECHNOLOGIES

- Navisworks
- AutoCAD
- TRAVIS
- eQuest
- Trace
- Revit

CONTACT
 Arvinder Dang, LEED AP BD+C, BEMF, HBDP
 arvinder@hmsdb.com
 (708) 207-5224
 hmsdb@hmsdb.com

QUALIFICATIONS

Profiles (con't)




Profiles (con't)




Committed to Care

Designed over **17.4 million square feet** of healthcare facilities in the last 10 years



Authentic, Passionate, Experienced

Healthcare performs best when it can flow freely—an efficient, sophisticated machine pulsing along at a steady, optimal pace. SmithGroupJJR understands this better than most. We have been part of the evolution of healthcare delivery for more than eight decades, designing everything from cost-effective community clinics to some of the world's most technically advanced hospitals and specialty facilities.



- Planned over 40 national medical center campuses
- Designed more than 3.5 million sf of hospital renovation projects in the past 5 years
- Developed national centers of excellence for oncology, cardiology, emergency and rehabilitative medicine
- Garnered nearly 90 healthcare design awards, including eight from Modern Healthcare


Lucile Packard Children's Hospital Oncology Renovation and Cancer Center, Stanford, CA



Post Acute / Rehab

National Intrepid Center of Excellence for Traumatic Brain Injury, Bethesda, MD

Learn more about the **NICOE Project**
<http://bit.ly/youtube-nicoe>



Continuity of Care

Healthcare doesn't end with the patient discharge. Our team understands the importance of the care continuum.

We've closely worked with an extended team of trauma specialists, neurologists, mental health specialists, and researchers from the NIH, and the Defense Center of Excellence for Psychological Health and Traumatic Brain Injury, to develop facilities concepts to support new models of specialized rehabilitation care.



Center for the Intrepid, National Armed Forces Physical Rehabilitation Center, San Antonio, TX

California Pacific Medical Center, Davies Campus Rehabilitation Facilities, San Francisco, CA

Profiles (con't)

firm profile



We design until it's right

a+c architects has over 25 years' experience designing custom architectural solutions for a diverse client base. Our involvement in the communities we serve lends us firsthand insight to design goals for the future. We see our role as not only a technical creator of space, but as experienced consultants with a knack for helping clients realize their vision.

We believe that the most successful projects are those in which **clients are actively engaged** in the design process from concept to construction. We build trust upfront with a casual yet professional demeanor, giving 110% in guiding each client to reach a design that exemplifies their goals.



Armenian Evangelical Church | Mount Prospect, IL

Our designs always follow discussion where we learn firsthand what is important for every client in their daily routine as well as in celebrating, creating and living. We leverage this knowledge with care and diligence to **provide a personal experience** throughout the architectural process. In turn, this translates to aesthetically appropriate, functional spaces that transcend trends. We take what inspires each client and visualize a design that is based on not just their wants and needs, but their world views. a+c architects take the aspirations of individuals and institutions alike and materialize these goals to a custom fit that naturally breeds functional, buildable places.



Kehiliet Chovevei Tzion Synagogue | Skokie, IL

services

- Architecture + Engineering
- Space Planning + Programming
- Site Planning
- Permit Process Management
- Interior Design

Construction Management

practice areas

- Institutional + Gathering
- Religious Spaces
- Early Education Facilities
- Single Family Residences
- Mixed-use + Multi-family

FOR ADDITIONAL INFO:

847.829.0801
info@acarchitects.net
acarchitects.net | @acarchitects

The professionals at a+c architects have drive and passion to excel at their respective crafts. Our **energetic team** delivers technically accurate drawings that are both buildable and beautiful. We have 75+ years of cumulative expertise in architecture and engineering for a range of building types, sites and clients. Raffi Arzoumanian is a seasoned mentor, educating staff on the processes of designing what is best for every project while pushing individuals to excel. This profession isn't just an occupation to us – it's an essential facet in our lives.



The Nook 2 Early Education Center | Chicago, IL

Culture of service-oriented design



Elm Romanian Pentecostal Church of Chicago | Chicago, IL

Sustainability plays a critical part in how a+c architects designs. As a member of USGBC, we aim to create a mutually beneficial rapport with the environment where buildings don't dirty, pollute or drain, but instead clean, purify, and inspire. We understand a building's position within the greater context. We recognize its impact on its immediate surroundings and the environment as a whole, and continually work to be responsible stewards of our neighborhoods and our planet. It is with this spirit that we approach projects with not merely an attitude of how we can create a minimal footprint, but rather how can we inspire and motivate behavior within and even beyond the structure.

Case Studies

PROJECT: Saieh Hall, Denk + Roche, Tonopah Library
SOFTWARE: InDesign, Photoshop
COMPONENTS: Graphics, writing, imagery, process chart
BRANDING: Based on Corporate guidelines

THE UNIVERSITY OF CHICAGO SAIEH HALL FOR ECONOMICS



LOCATION

Chicago, Illinois

OWNER

The University of Chicago

PROJECT TEAM

dbHMS
Ann Beha Architects
ecube, inc.

COMPLETED

2014

AWARDS

AIA Illinois Frank Lloyd Wright Award
for New Design or Renovation, 2016

CBC Merit Awards-CBC/COAA
Owner's Choice Awards, 2015

Design Excellence Awards, Boston
Society of Architects, Honor Award,
2014

SEAOI Excellence in Structural
Engineering, Best Renovation /
Retrofit, 2014

SCUP Excellence in Planning Honor
Award, 2014

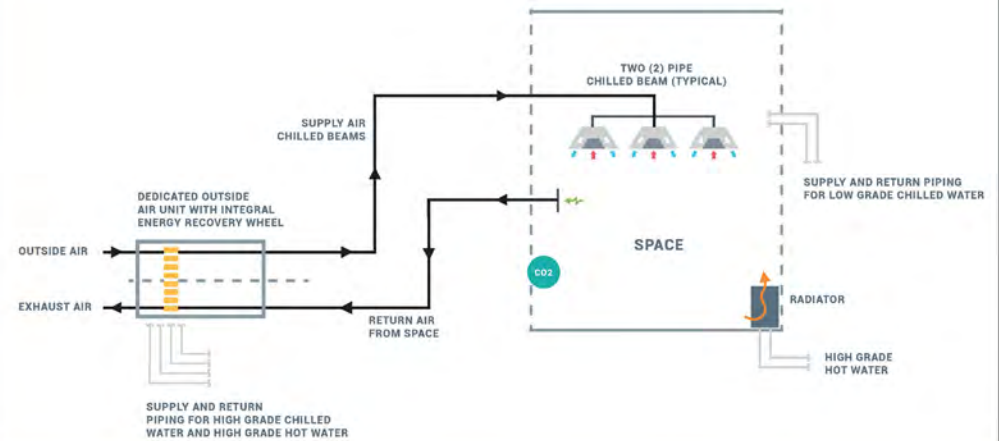
Case Studies (con't)

The renovation of Saieh Hall (100,000 sf) concentrated on the adaptive re-use of and addition to the historic Theological Seminary building constructed between 1923 and 1928. The building consolidated the educational program on the west and the administrative offices on the east, allowing the load and airflow distribution to be uniform throughout each wing.

The building is served by campus steam and chilled water systems. The conditioning of a historic space requires systems that provide a balance of efficient airflow delivery, while maintaining the appropriate aesthetics. The design solution included an analysis of computational fluid dynamics to optimize an airflow delivery method at select areas in the chapel, ensuring adequate cooling and heating throughout the space.

The project achieved LEED Gold certification.

CONCEPT DIAGRAM



Saieh Hall includes an array of active chilled beams throughout the building. Local hot water radiators provide an aesthetic effect throughout the building and tie into the local controls for each zone. Coupled with the chilled beam system, a dedicated outside air unit that provides ventilation air into the building. The system has energy recovery capabilities through an energy recovery wheel integral to the unit.

Table 1: Predicted Energy Performance Relative to ASHRAE 90.1-2007 Baseline

Energy	Energy Model	Baseline
Electricity Consumption	655,172 kWh	714,879 kWh
Purchased Chilled Water	2,284,354 kBtu	3,127,174 kBtu
Purchased Steam	2,054,818 kBtu	3,663,465 kBtu
Total Consumption	6,575 MMBtu	9,230 MMBtu

Table 2: CO2 Reduction from ASHRAE 90.1-2007 Baseline

Energy	Energy Model	Baseline	Reduction
LBS CO2 Emitted*	769,078	714,879 kWh	310,555
Estimated Building Energy Intensity (kBtu/sf)	65.2	91.6	26.3

Case Studies (con't)

COMMERCIAL



ac architects
DENK & ROCHE LLC
BENSENVILLE, IL

This Chicagoland contracting firm used a portion of their existing 2-story manufacturing warehouse to house a new, vibrant headquarters for all workers. This new corporate program addresses various aspects of construction by defining spaces with materials Denk & Roche use regularly – metal, brick and wood. This maintains an industrial design aesthetic while keeping the space familiar to employees and visiting trade workers.

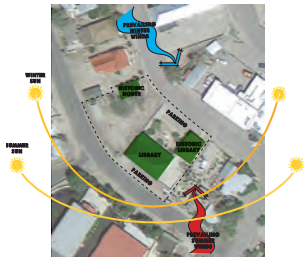
Little sunlight originally came through the building; the windows faced east and were only on the first floor. a+c architects removed a section of roofing and placed clerestory windows on the second floor in addition to several new windows, flooding even back areas with light.

A light-filled renovation modernizes an existing warehouse into a state-of-the-art corporate headquarters.

14,552 sf
 \$1.5 Million

Architectural Engineering
 Design Bid Build Delivery

TOWN OF TONOPAH LIBRARY MASTER PLAN GRAPHICAL REPRESENTATION



SITE ANALYSIS



EXISTING CONDITIONS



OPTION A



OPTION B



OPTION C



Resumes

PROJECT: Resumes for various employers
 SOFTWARE: InDesign
 COMPONENTS: Layout, original content
 BRANDING: Existing and original corporate guidelines

Mr. Kris Lucius, RLA, ASLA, LEED Green Associate



卢卡斯先生的设计经验包括从引领试验性项目到概念化规划设计如何决定公共场地的空间特性。他对于应用手稿和电脑软件为客户提供不同的模型与选择，和表达客户对项目愿景非常熟练。他致力于为建设一个独特并令人难忘的城市与社区提供创新性的设计方案。

Kris Lucius' experiences range from championing pilot projects to conceptualizing how strategic design determines the spatial identity of public places. He is adept at creating multiple options through hand- and computer-rendered models, providing diverse opportunities for expressing a client's vision. Kris is continually striving to create solutions within challenging parameters that bring an iconic and memorable sense of place to the community as a whole.

- 教育背景**
- 景观设计硕士
哈佛大学
2008
- 景观设计学士
俄亥俄州立大学
2004
- 执业注册资格
注册景观设计师
LEED®专业资格认证
- 专业组织
美国景观设计师协会

- Education**
- Master of Landscape Architecture, Harvard University, 2008
- Bachelor of Science in Landscape Architecture, Ohio State University, 2004
- Registrations**
- Registered Landscape Architect, Massachusetts
- LEED Green Associate
- Affiliations**
- American Society of Landscape Architects

- 美国伊利诺伊州威明顿市威明顿湖滨设计
- 美国华盛顿特区东南林荫大道规划研究*
- 美国弗吉尼亚州亚历山大市西艾森豪威尔地块规划设计*
- 美国伊利诺伊州芝加哥市洛约拉大学温斯洛普街景观设计和圣伊格内斯广场设计
- 美国伊利诺伊州芝加哥市洛约拉大学戴蒙广场设计
- 美国伊利诺伊州唐纳森格罗夫市Advocate儿童医院
- 美国伊利诺伊州芝加哥市Weber Spur 步道
- 美国伊利诺伊州芝加哥市东北伊利诺伊大学教育大厦
- 美国伊利诺伊州埃文斯市Chamberlain集团总部
- 美国伊利诺伊州芝加哥市摩根浅滩滨水总体规划
- 美国伊利诺伊州海兰帕克市中央公园断崖走道设计

*在加入SmithGroupJJR之前的项目经验

- Wilmette Park District, Wilmette Lakefront Plan, Wilmette, Illinois
- Southeast Boulevard Planning Study, Washington, DC*
- Eisenhower West Small Area Plan, Alexandria, Virginia*
- Loyola University Chicago, St. Ignace Plaza & Winthrop Avenue, Chicago, Illinois

Additional SmithGroupJJR Projects as Design Landscape Architect:

- Damen Plaza at Loyola University, Chicago, Illinois
- Advocate Children's Hospital, Downers Grove, Illinois
- Weber Spur Trail, Chicago, Illinois
- Northeastern Illinois University Education Building, Chicago, Illinois
- Chamberlain Group Headquarters, Oak Brook, Illinois
- Morgan Shoal Lakefront Master Plan, Chicago, Illinois
- Central Park Bluff Stairs, Highland Park, Illinois

*Experience prior to SmithGroupJJR



John Helfrich, EI

Project Civil Engineer



Education
 Bachelor of Science in Civil Engineering
 University of Illinois at Chicago, 2011

Registration
 Engineering Intern

Professional Engineer
 Civil Engineering
 State of Illinois, 2015

1. Royal Farms at 1111 East Highland Park Illinois
 Preparation of final engineering documents on the parking improvements north of the main Royal Farms women site. Civil Engineer.

2. Advocate North-Care Illinois/Massachusetts Children's Center of Chicago Illinois
 Site design and civil engineering services including design for vehicular gateway and circulation, neighborhood park and open space, courtyard gardens, streetscape landscape, and sustainable site features to complement the 161,000 sq ft expansion of the Illinois Masonic Medical Center. The first phase will include the new Diagnostic Health Program and Ambulatory Surgery Center as well as an expansion of the existing Cancer Program. Targeting LEED Silver. Project Civil Engineer.

3. Loyola University Chicago Campus, Vernon Hills, Illinois
 Schematic design through construction administration for landscape architecture and civil engineering services for the new pavilion building at Casey Museum. Includes upgrading the building utilities, parking service area, pavilion terrace, and basic pedestrian access. Civil Engineer.

4. Loyola University Chicago Chapel Gardens, Chicago, Illinois
 Design of a new public space connected to its Makenna della Strada Chapel and Lake Michigan. This is to be the last undeveloped parcel to be cleared for open and green space along Lakefront. Civil Engineer.

5. Loyola University Chicago Current Fall Chicago, Illinois

The new four-story academic building and site design will complete the master plan vision for a new quadrangle in the center of campus. The site design integrates plans, campus walks and landscape with the new building and surrounding area to provide form and character for the vital open space in the urban setting. Sustainable practices including a green roof, permeable pavements and storm water quality treatment have been incorporated in pursuit of LEED NC 2.2 Gold Certification. Civil Engineer.

6. Northwestern University Kirkland Campus, Evanston, Illinois
 As part of the Evanston Campus Framework Plan, the Mid Campus Green project focuses on developing more open space to the south and east sides of campus.

This includes creating new open spaces and landscapes, developing the core campus as a pedestrian environment, moving parking to campus entrances, and providing pedestrian links along north/south, east/west and public transit routes. Project Civil Engineer.

7. Illinois Institute of Technology Mid Campus Green Drainage Study, Evanston, Illinois

A capacity study of the 42-inch storm outfall and stormwater system was conducted to determine how much runoff the system could accept from the Mid Campus Green project. Existing conditions were studied using recent surveys and drainage studies provided by Northwestern University. Project Civil Engineer.

8. Northwestern University Alton Hall Green Space, Evanston, Illinois

Schematic design through construction documents and construction administration for the creation of usable outdoor seating and lawn space, improved bike parking, and new walks where there were once a sea of blue muck in a patch of muck. This residence hall has an improved welcoming entrance for students and open space for everyday use. Civil Engineer.

John Helfrich provides essential engineering design and technical support for complex and multi-disciplinary projects. John engages projects from concept through construction with a collaborative and innovative spirit. John is experienced working closely with clients, architects, engineers, and construction partners to create distinguished and functional designs. His permitting experience with numerous agencies, including the City of Chicago and Metropolitan Water Reclamation District of Greater Chicago, provides him with the ability to efficiently navigate the permitting process.



September 19, 2014 SMITHGROUP | VSA Associates Incorporated / (on at Division of Narrative Art / Civil Engineering Services 33

Kris Lucius, RLA, ASLA, LEED Green Associate Design Landscape Architect



Kris Lucius' experiences range from championing pilot projects to conceptualizing how strategic design determines the spatial identity of public places. He is adept at creating multiple options through hand- and computer-rendered models, providing diverse opportunities for expressing a client's vision. Kris is continually striving to create solutions within challenging parameters that bring an iconic and memorable sense of place to the community as a whole.

Education
Master of Landscape Architecture,
Harvard University, 2008

Bachelor of Science in Landscape
Architecture, Ohio State University,
2004

Registrations
Registered Landscape Architect,
Massachusetts

LEED Green Associate

Professional Affiliations
American Society of Landscape
Architects



Seam's Point
Tysons, Cornet, VA



Vertical Slice Garden
Taichung, Taiwan



Finch & M Residences
Washington, DC

CHRIS SMIALEK, IIDA, LEED AP Project Manager



Chris has more than 18 years of project management in the corporate, federal, and local build-to-suit markets. She is skilled in all phases of the interior design process, including project and client management, programming, schematic design, design development, construction documents production, architectural detailing, bidding process, construction administration, and project closeout. Chris' strengths in management include the ability to mitigate project risks, successful promoting of new ideas, multiple simultaneous projects, team building/mentoring, and the inspiration of others to top performance.

Education
Bachelor of Arts, Interior Architectural
Design, Virginia Commonwealth
University

Registrations
National Council for Interior Design
Qualification (NCIDQ)
International Interior Design
Association
LEED Accredited Professional

Technical Expertise:
Complex Project Management
Corporate Campus Programming
Sustainable Interior Design

References
Jeffrey Elle, VP Global Real Estate
Kaplan Group
T: 212.492.5922

Robert Neuman, Jr., Sr. Principal
JM Zell Partners, Ltd.
T: 202.682.8743

Jennifer Olson, LEED AP, Principal
KGO Project Management
T: 202.719.0452

Blackboard Inc., Worldwide
SmithGroupJJR is reimagining
this Educational Technology firm's
workspaces in their satellite offices
worldwide, by developing new design
standard guidelines to promote a
more collaborative, creative and
sustainable workplace. Project
Manager.

**Exelon Headquarters, Baltimore,
Maryland**
Interior design services for new
350,000 sf headquarters to serve
as the energy trading center for
the wholesale, retail and renewable
energy development operations,
as well as Exelon's Baltimore-based
administrative offices. Spaces will
include a 70,000 sf, 600 seat trading
floor, a 20,000 sf conference center
and executive offices in addition to
typical office space. Project Manager.

**Graham Holdings Company,
Rosslyn, Virginia**
Formerly The Washington Post Co.,
this 35,000 sf project involves not
only a relocation from its previous
headquarters of over 60 years to
Virginia, but also an opportunity to
rebrand the new company, which
includes Kaplan Learning, local

television stations throughout the
country, and online business units
including Slate, The Root and Social
Code. Project Manager.

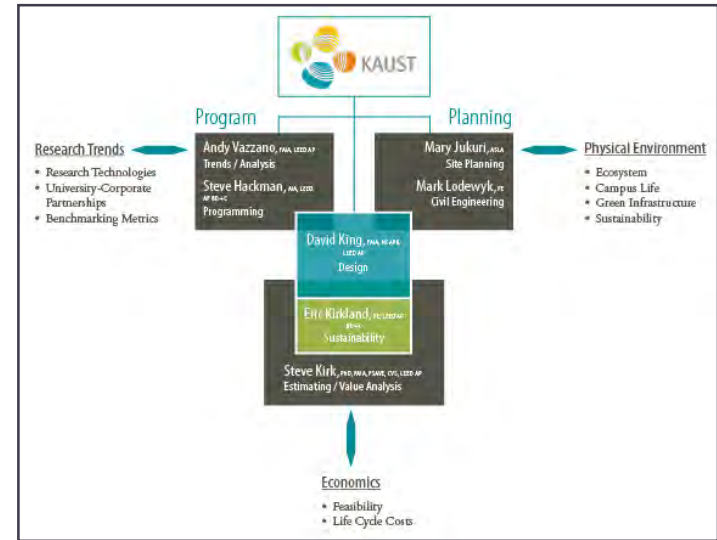
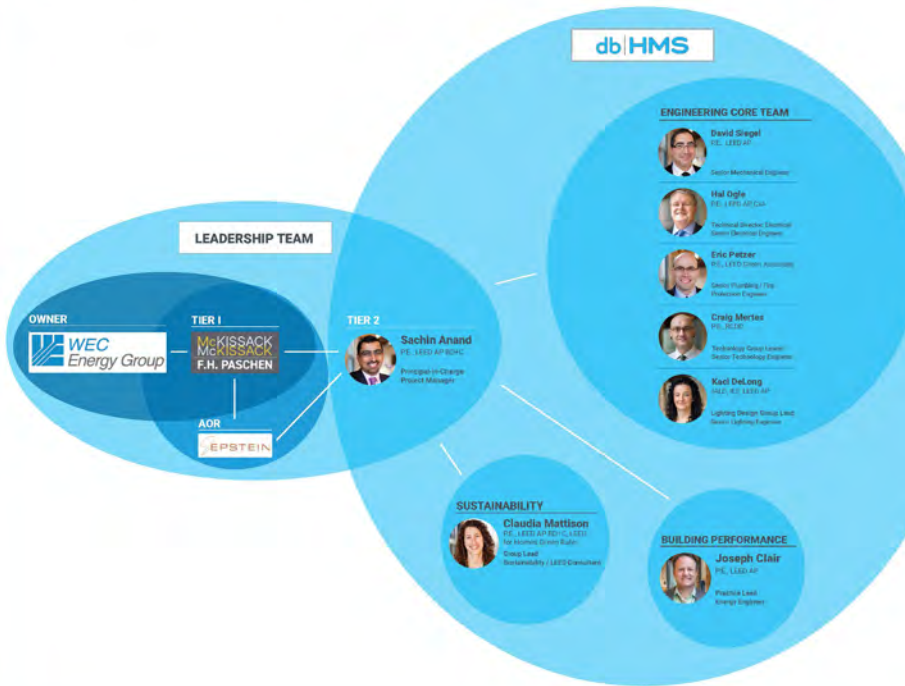
Sprint Nextel, Reston, Virginia*
Master planning and re-stack of
more than 1 million sf in 8 buildings
on the East and West Campuses.
Project included development and
production of High Level Stack Plans
and Neighborhood Adjacency Plans,
setting space standards; development
of circular multi-building move
sequencing; and allocation of real
estate for final move destinations.
On-site Planning Team, Senior
Project Manager.

**Sallie Mae Headquarters,
Reston, Virginia***
230,000 sf, nine-floor corporate
office space, including programming/
stacking of existing and future client
requirements for new headquarters
facility. The new building features
conference center, fitness center,
cafeteria/dining space, executive suite,
and a fifty-seat board room. Project
Manager and Designer.

Org Charts + Placemats

PROJECT: Corporate organization charts for various employers. Placemats including project team org charts + schedules
 SOFTWARE: InDesign, Illustrator
 COMPONENTS: Layout, graphics, imagery
 BRANDING: Existing and original corporate guidelines

TEAM ORGANIZATION



Org Charts + Placemats (con't)

Pleased to meet you, Promega.

CORE TEAM



Andy Vazzano
Planning Principal



Brian Bilski
Project Manager



Marilee Lloyd
Sr. Laboratory Planner



Deborah Nemeth
Office Workspace Planner



Coty Sandberg
Concept Designer

SUPPORT TEAM



Victor Cardona
Technology Specialist



Andrew Cherry
Cost Modeling/
Benchmarking Planner

▲ = Interviews ● = Workshops ● = Monthly Meetings & Reports

**All meeting dates in-site*



NOTES



Logos / Branding / Signage

The following samples are grouped by category. All were created from original concepts using Photoshop, InDesign and Illustrator.

Stephanie Jensen Weddings' logo was created from a hand-drawn lotus flower imported into Procreate, overlaid with a digital rendering, then merged with typography in Illustrator.

Partnering with each client in a holistic collaborative effort helped to realize custom designs that reflect their brands and overall vision.

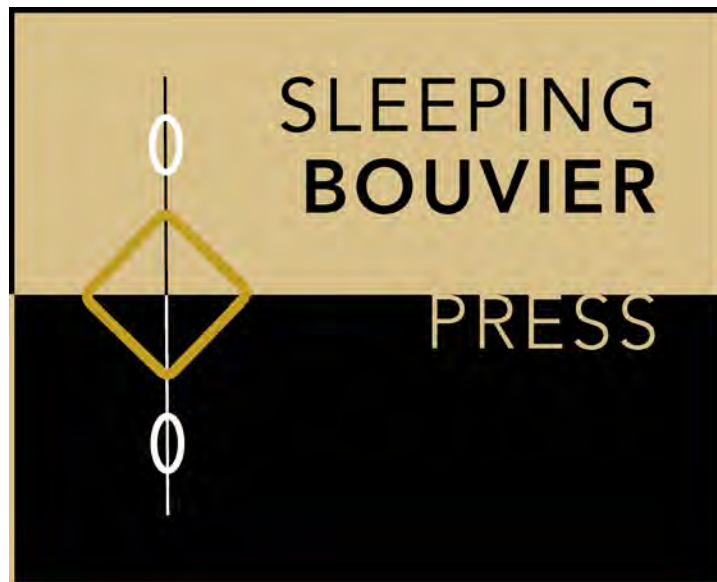
Logos

PROJECT: Various logo designs

SOFTWARE: Illustrator, Photoshop, Procreate, hand-drawn line art


COMPONENTS: Graphics

BRANDING: Original branding



Logos (con't)



 **2 Firm Identity Standards**

GENERAL

The official logo is the primary component of the a+c architects graphic identity system. This logo replaces all other pre-existing logos for the firm. The authorized configurations shown in this document are the only approved logos.

LOGO + VARIATIONS

The preferred background color for the a+c architects logo is gray, and for text it is white. Black or white may also be used as a background color, but the primary logo must be in white text on gray background.

The primary logo shows 'a+c' in white on a gray background, with 'architects' in a smaller white font below it.

Primary Logo: White/Gray
Lettering in white or "paper"
Background in a+c Gray
(C=51 M=44 Y=44 K=8)
If logo is placed on top of a graphic element that is also a+c Gray, it may include a white border up to 2pt thick depending on size. If the logo is exactly or smaller than 2" square, the border should be 1pt thick or less.

The secondary logo shows 'a+c' in gray on a white background, with 'architects' in a smaller gray font below it.

Secondary Logo: Gray/White
Lettering in a+c Gray
(C=51 M=44 Y=44 K=8)
Background in white or "paper"
1pt box in a+c Gray. If the logo is exactly or smaller than 2" square, the border should be 1pt thick or less.

The tertiary logo shows 'a+c' in black on a white background, with 'architects' in a smaller black font below it.

Tertiary Logo: Black/White
Lettering in black
(C=0 M=0 Y=0 K=100)
Background in white or "paper"
1pt box in black. If the logo is exactly or smaller than 2" square, the border should be 1pt thick or less.

© a+c architects | a+c architects | @aglisacandjacob

Branding

PROJECT: Various brand designs for websites, cards, flier, e-book cover

SOFTWARE: Illustrator, Photoshop, InDesign

COMPONENTS: Graphics

BRANDING: Original brand guidelines

COLORWAY 1



Mauve Dk 1



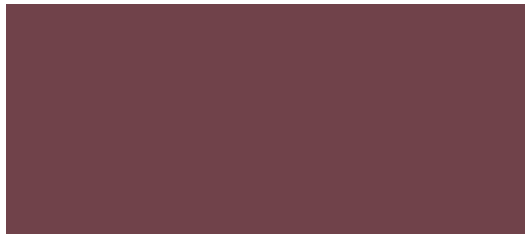
Deep Blue 1



Nude 1



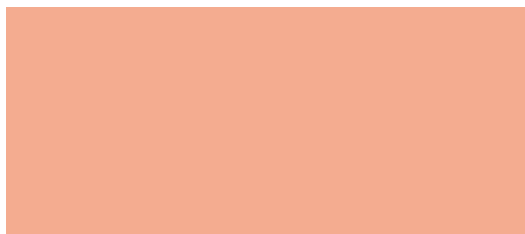
COLORWAY 2



Mauve Dk 2



Deep Blue 2



Nude 2



Mauve Dk 1

Mauve Med 1

Mauve Lt 1



Mauve Dk 2

Mauve Med 2

Mauve Lt 2



Green Mute Dk 1

Green Mute Med 1

Green Mute Lt 1



Green Mute Dk 2

Green Mute Med 2

Green Mute Lt 2



Peach Dk 1

Peach Med 1

Peach Lt 1

Fonts Kate Glickman Branding

LOGO / HEADLINES

Adrianna - current card font* Quiche Sans

Graphie Sofia Pro

IvyMode Upgrade Lights

OmnesPro

TEXT

Ainslie Sans

Basel Neue

Bilo

Imperial URW

Minerva Modern

New Hero

Transat Text

Utile Display

Branding (con't)



Front 4



Front 5



Front 6



Back 4



Back 5



Back 6

Kate Glickman, LCSW
Founder

moderntherapychicago.com

312-516-4303
kateglickmantherapy@gmail.com
1820 Webster | Chicago, IL 60614

Kate Glickman, LCSW
Founder

moderntherapychicago.com

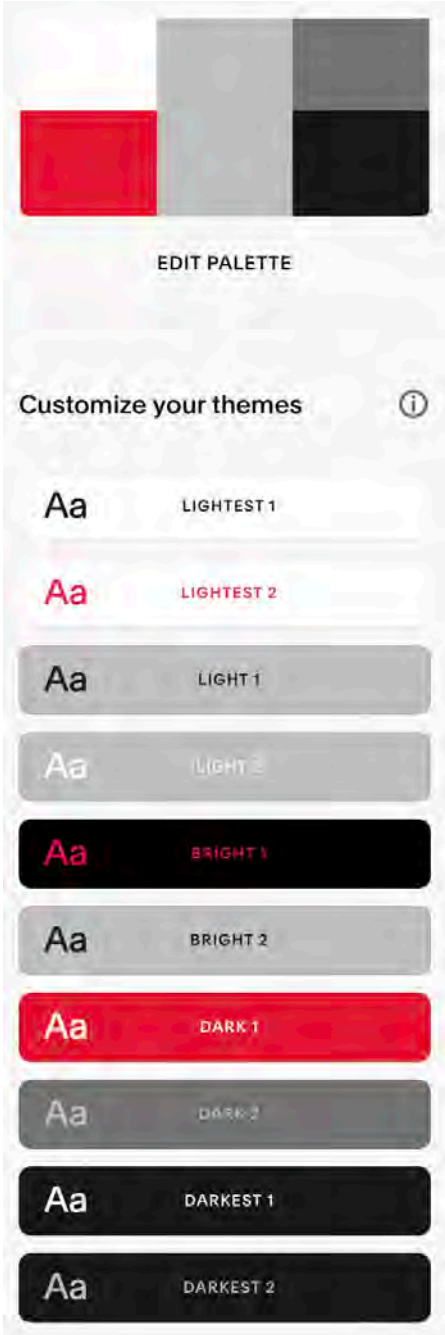
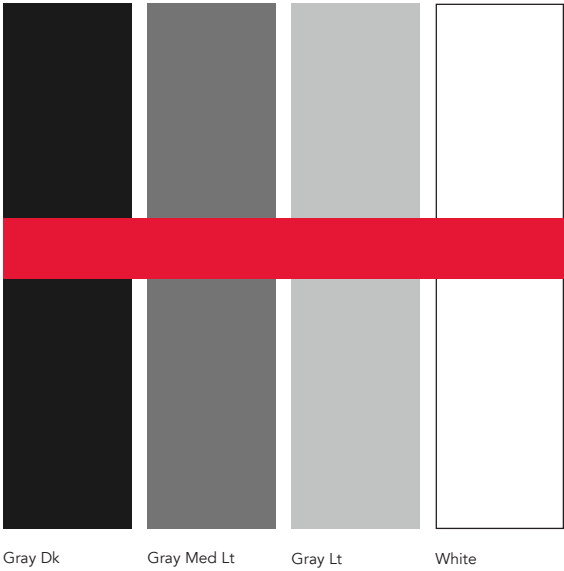
312-516-4303
kateglickmantherapy@gmail.com
1820 Webster | Chicago, IL 60614

Kate Glickman, LCSW
Founder

moderntherapychicago.com

312-516-4303
kateglickmantherapy@gmail.com
1820 Webster | Chicago, IL 60614

Branding (con't)



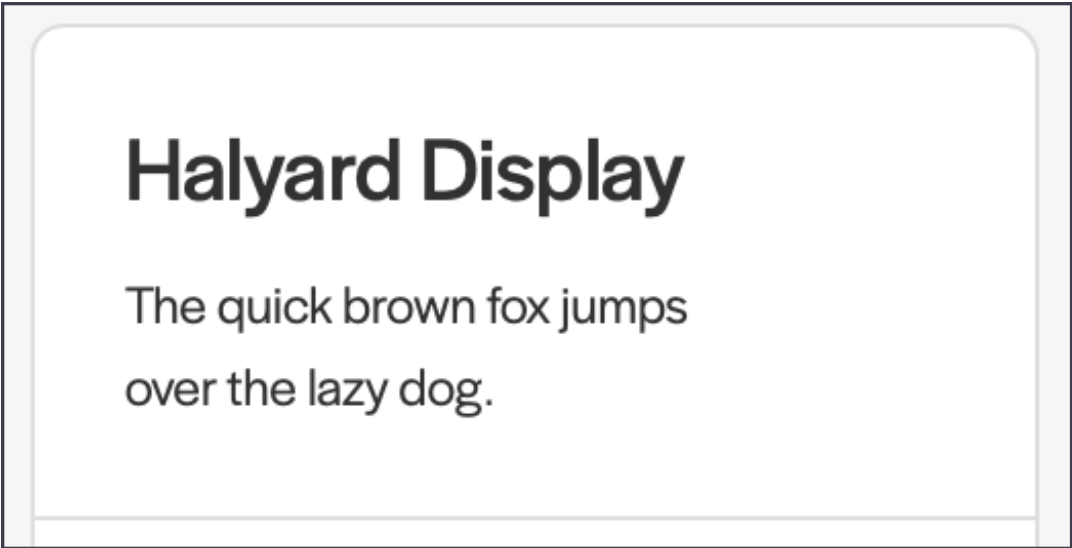
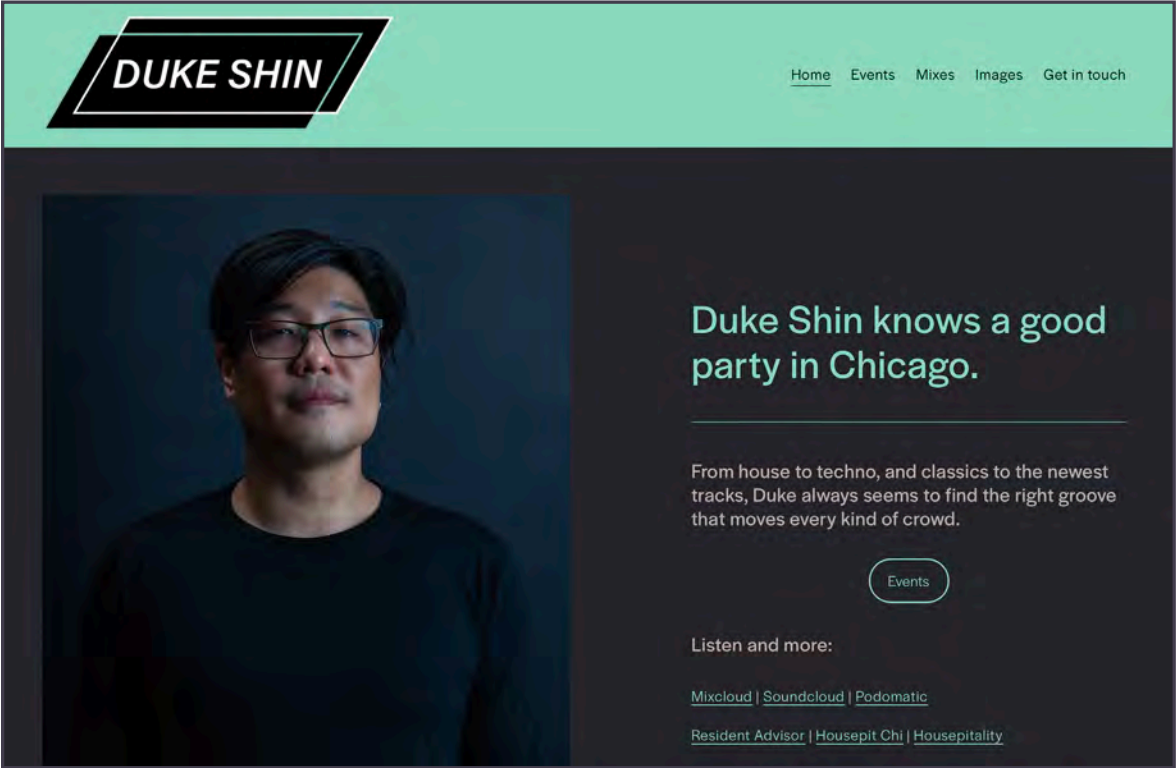
GABRIEL PALOMO



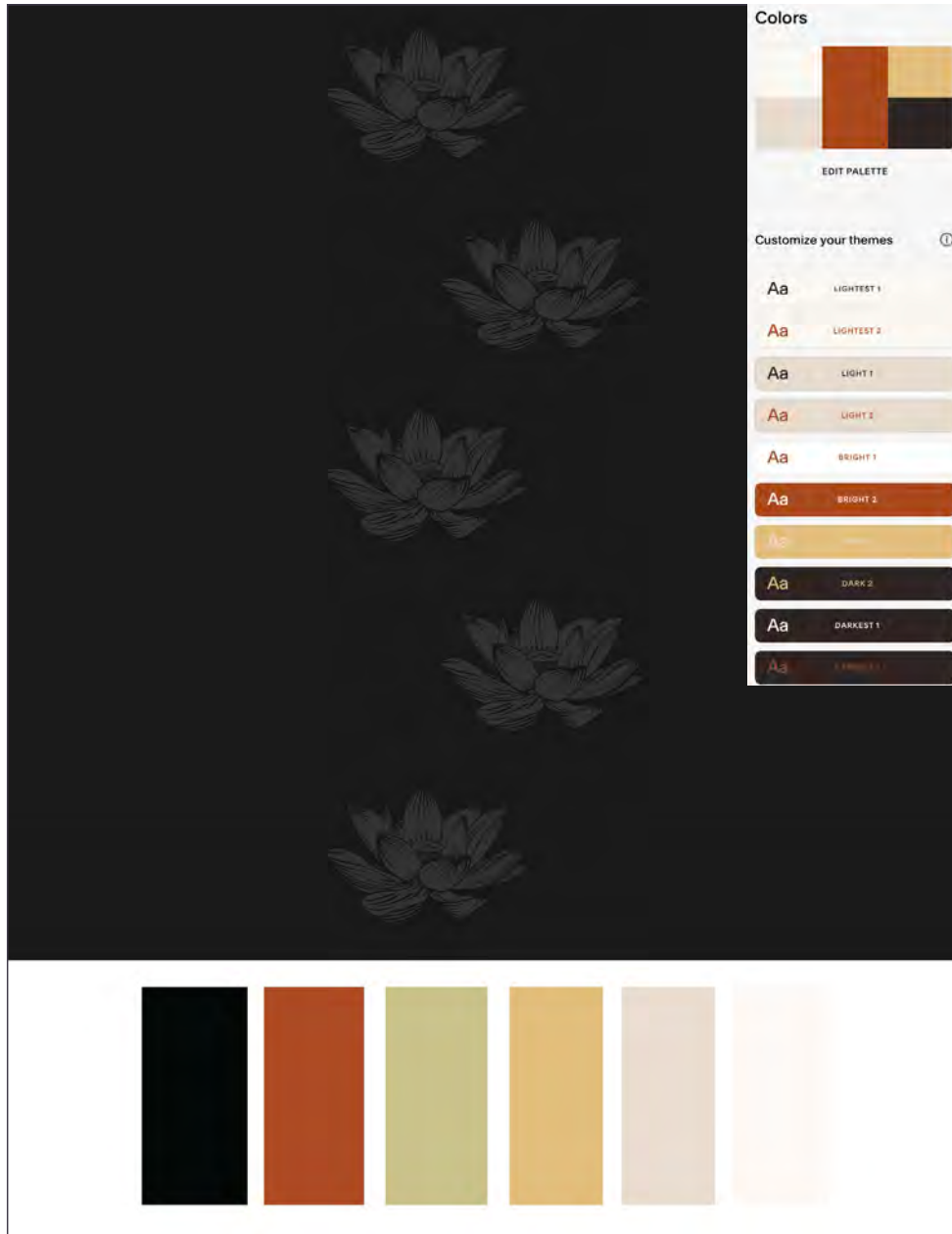
- FONTS
 gabrielpalomo.net
- LOGO*/HEADLINES**
 CHAINPRINTER*
 PRINTF*
 LarabieFont
 Orbitron
 PIRULEN
 Sol Pro
 Tenby 7 Regular #
- TEXT**
 Chypre normal medium
 Clicker
 Darkmode
 DDT
 Fira Sans Regular Mono
- Hero New
 P22 Underground
 Transat Text
 Univia Pro
 Vox



Branding (con't)



Branding (con't)



FONTS

Stephanie Jensen Weddings

WEBSITE

Didot Regular. The quick brown fox jumps over the lazy dog.

[Actual Squarespace font is Linotype Didot.]

LOGO

QUICHE SANS REGULAR
STEPHANIE JENSEN

*Lindsay Signature
Weddings*

FINO SANS REGULAR
CHICAGO AND BEYOND / 2017

Branding (con't)

Fifteen years into her marriage Mara discovers a secret about her husband Matt that will carry dire consequences for their family. Under the microscope of a small town in Northern Wisconsin doesn't feel like an easy place to go through major life changes, but Mara and Matt must find a way for the sake of their children. Hard choices can lead to expansive new beginnings in this novel of love, breakup, and enduring family ties.



A native of Wisconsin, **J.L. Steinmetz** currently makes her home in Westchester County, New York. She has lived in Vienna, Salzburg, Budapest, Berlin, and London, and has graduate degrees in US law and German Literature. This is her debut novel.



J.L. STEINMETZ
SUPERIOR LIES

SUPERIOR LIES

J.L. STEINMETZ



Branding (con't)

MAILING LABELS

There are two sets of mailing labels to be used: one for letters (Avery 8160) and one for shipping envelopes (Avery 5264). A template has been designed for each, with both using the MS Reference Sans Serif font.

Letter: Labels must have address justify right.

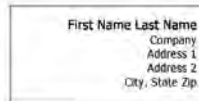
Shipping: A 2-row, 2-column invisible grid should be created allowing the placement of the a+c architects logo and return address in the top left box and a space to print the recipient address justified right in the bottom right box.

BUSINESS CARD

Business cards are double-sided and printed on thick linen card stock as specified and purchased by APR Graphics in Skokie, IL. Cards are 3.5" x 2" and designed in landscape format.

Front: Every staff member's card front is identical. Silver metallic ink is the only color used. Logo is placed 3/8" away from top and top right corners, with remainder of card filled in using same silver. 1/4" bleed is required with cards cut to crop marks.

Back: Black and silver ink are used. Margins are 1/2" on all sides. Black logo used and scaled to 1" square. See example below for how content should be organized.



FIRM COLORS

Always use the selected CMYK color when offset printing and RGB color for on-screen display.



a+c Gray

C=51 M=44 Y=44 K=8

R=129 G=128 B=126



Black

C=0 M=0 Y=0 K=100

R=0 G=0 B=0



White

C=0 M=0 Y=0 K=0

R=225 G=225 B=225

FONTS

BODY COPY

Arial

ABCDEFGHIJKLMNOPQRSTUVWXYZ

Arial Italic

ABCDEFGHIJKLMNOPQRSTUVWXYZ

Arial Bold

ABCDEFGHIJKLMNOPQRSTUVWXYZ

Arial Bold Italic

ABCDEFGHIJKLMNOPQRSTUVWXYZ

LOGO

MS Reference Sans Serif

UNACCEPTABLE ARRANGEMENTS

Never distort the logo, typeface or alignment within the logo in any way. Logo must be scaled at same proportions, never on a slant or with different colors than what is specified. Color other than variations of gray should not be used unless prior approval is gained from a Principal (usually for a response to Requests for Proposals (RFP) or Requests for Qualifications (RFQ)).

Signage

PROJECT: Annual report sign, event flier, memory board, trade show signage, award ceremony signage

SOFTWARE: InDesign, Illustrator, Photoshop

COMPONENTS: Layout, graphics, imagery


BRANDING: Existing and original corporate guidelines

2023

ANNUAL PLAN

● ● ●

Becoming a Marketing & Sales Juggernaut




TOP 3 ANNUAL RESULTS

NAUT // (def)


// JUGGER

“A huge, powerful, and overwhelming force or institution.”




60

Specialty Sales



100%

Department Standards



200

Fleet Sales

MONTHLY OBJECTIVES

MARKETING

- MAG – 40 Quality Leads
- APEX – 50 Quality Leads

SALES

- MAG – 16 Fleet Sales
- APEX – 5 Specialty Sales

DESIGN

- < 30 Days To Customer Design Package

OPERATIONS

- Production Timeline Accuracy < 7 Days

FINANCE

- Financials Complete By The 5th Business Day

SUPPLY CHAIN

- Job Kitting 3 Days Ahead of Consumption

MANUFACTURING

- Zero Deficiencies Upon Customer Take Possession

THE STRATEGIES

MARKETING

- Website Schedule Plan
- Lead Generation Analytics

SALES

- MAG ~24 Deposits
- APEX ~15 Design Retainers

DESIGN

- Incorporate Group Dynamics

OPERATIONS

- Time Tracking

FINANCE

- Clear Communication Budget Vs Actual

SUPPLY CHAIN

- Vendor Introduction Visits

MANUFACTURING

- Zero Deficiencies Upon Customer Take Possession

QUARTER 1 ROCKS

MARKETING

- MAG- Complete Website
- APEX- Complete Website

SALES

- MAG – Prospecting Plan/ Schedule Plan
- APEX – Sales Standards

DESIGN

- Design Standards

OPERATIONS

- Top 10 Standards

FINANCE

- Finance Standards

SUPPLY CHAIN

- Vendor Relationship Status

MANUFACTURING

- Cleanliness
- Workflow

Parenting Support Group

for Parents of Kids Aged 9-16

CHALLENGES

- My child is having **trouble making friends** - but I'm the one who is feeling like a middle schooler again.
- It's very difficult for me to distinguish my **social issues** from my child's.
- The idea of my child **being left out** feels unbearable.

Determine effective strategies for communicating with your kids, other kids, other parents, teachers, and administrators.



ONLINE

Tuesdays 10:30am - 12pm



IN PERSON

Wednesdays 6pm - 7:30pm

Make **confidential connections** with parents confronting similar struggles

\$70
per session

- Phone intake required

Kate Glickman Psychotherapy
kateglickmantherapy@gmail.com

312-516-4303
1820 W. Webster Ave.
Chicago, IL 60614

Signage (con't)

Market Cap

\$290MM \$766MM \$892MM \$1,666MM \$2,470MM

HALLCOMID®

Brzaj Dolny 2010

Wedding 2013

Nanjing 2016

KMCO

NATSURFACT

Winder Agricultural Innovation Center 2021

SCL 75th Anniversary 2007

Singapore 2010

Ecatepec 2018

Pasadena 2022

Columbus 2013

Tebas 2016

Myriant 2021


INVISTA - Vlissingen 2021


2006 2010 2014 2018 2022


F. Quinn Stepan, Jr., CEO 


Signage (con't)


PINEAPPLE AUDIO
THE SOUND OF HOSPITALITY™



CONSULTATION & DESIGN


AV INSTALLATION


CONTROL SYSTEMS


CUSTOM DJ BOOTHS


SERVICE & MAINTENANCE

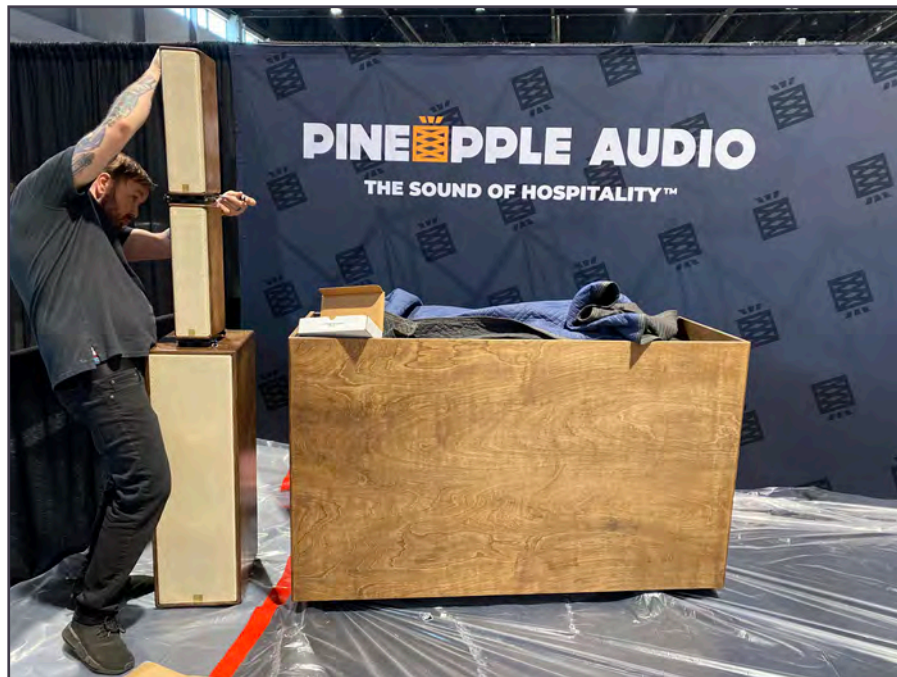


MAKE EVERY SPACE EXACTLY
WHERE YOU WANT TO BE

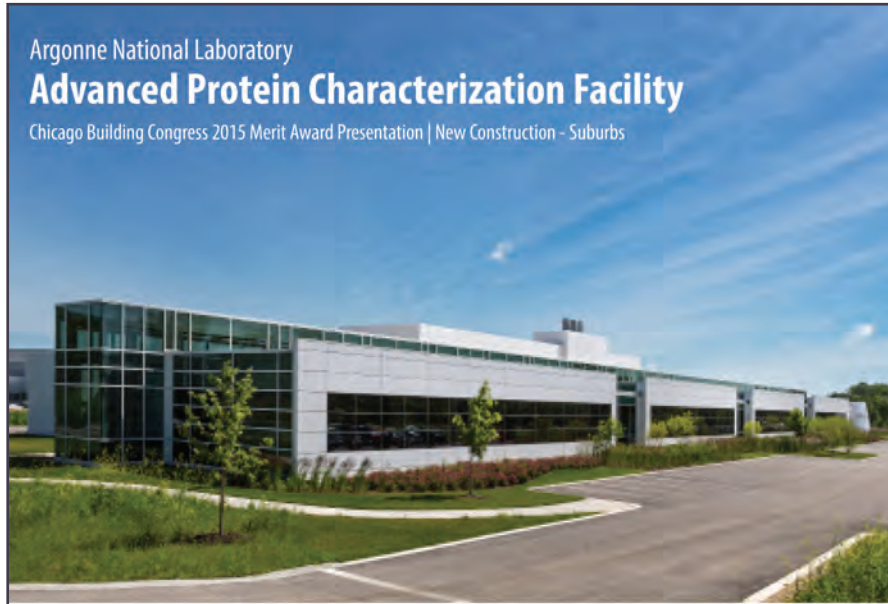
This vertical graphic features a background of pineapples at the top and bottom. The central section has a dark wood-grain texture. It lists five services, each with a yellow icon: Consultation & Design (pencil/paper), AV Installation (hand with screwdriver), Control Systems (speaker), Custom DJ Booths (DJ booth), and Service & Maintenance (gear/hand). A QR code is located at the bottom, above the slogan 'MAKE EVERY SPACE EXACTLY WHERE YOU WANT TO BE'.

PINEAPPLE AUDIO
THE SOUND OF HOSPITALITY™

This graphic features a dark grey background with a repeating pattern of the Pineapple Audio logo. The logo consists of the word 'PINEAPPLE' in white, with a yellow pineapple icon replacing the 'A', followed by 'AUDIO' in white. Below it is the tagline 'THE SOUND OF HOSPITALITY™' in a smaller white font.



Signage (con't)



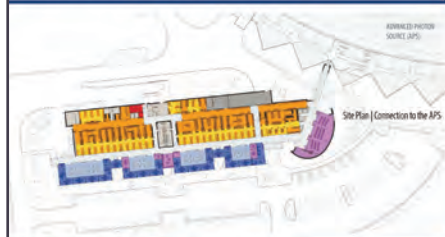
Argonne National Laboratory Advanced Protein Characterization Facility

Chicago Building Congress 2015 Merit Award Presentation | New Construction - Suburbs

The new Advanced Protein Characterization Facility (APCF) for Argonne National Laboratory (ANL) encompasses a multidisciplinary science and engineering research center. The function of this 55,500 gsf, \$20 million world-class facility allows for modern advancements in biological research while planning to pursue additional programmatic support and new equipment in the future. Researchers will be provided with the most advanced technology and expertise for protein science characterization in Illinois and nationwide.

Project Overview:

- **Location:** Argonne National Laboratory - Argonne, IL
- **Owner:** Argonne National Laboratory
- **Team:** Jacobs Engineering Group Inc., SmithGroupJJR, and Clark Construction
- **Program:** Biology/Bioscience Research Facility
- **Size:** 55,500 gsf
- **Sustainability:** LEED Gold®



Above: 1 | Building entry, 2 | Main circulation corridor and clerestory windows, 3 | Conference center, 4 | Open laboratory space, 5 | West terminus.
Left: Building Section, SE-NW

Design

- Materiality and scale of campus context
- Direct connection portal to the APS experimental hall, streamlining functional efficiency between APCF and APS
- Modern, flexible and adaptable space
- Daylighting strategies for natural lighting and program transparency



Construction

- Planning around client operations
- Adjacent to vibration-sensitive research in APS
- Innovative enclosure construction
- State-of-the-art building materials
- Coordinating work with client values
- MEP-dense construction with open ceiling architecture



Safety

- Zero job site accidents/incidents and 100 percent compliance, 100 percent of the time
- Job Safety Analysis and Task Safety Analysis completed and reviewed prior to performing work
- Collaboration through daily 'Plan of the Day' meetings, weekly management and team safety walks
- Weekly executive safety inspections and monthly safety luncheons



Community

- Maximize collaboration among scientists
- Host internationally renowned scientific organizations
- Cooperative effort between the State of Illinois and Federal government to benefit society as a whole
- Global leader in the characterization of biomedical proteins in support of the fight against infectious diseases



Advanced Protein Characterization Facility



References

1) **Kate Glickman, LCSW** / 312-516-4303 / kateglickmantherapy@gmail.com / In 2018 I build Kate's current website www.moderntherapychicago.com, and we're scheduled to create a new one in 2024. Initial branding was done for her psychotherapy practice in 2022, then updated with a full package in November 2023. Kate and I have known each other for 17 years.

2) **Laura Foster** / 773-576-7032 / laura@creativelifecs.com / Laura owns Creative Life Counseling Services and is a licensed clinical social worker. / I met Laura in 2019 when she approached me to create a new website for CLCS in Squarespace. Following a successful site launch, she and Cynthia Bassuk (Owner, Artemis Counseling) hired me to create their umbrella company website (ACCL Chicago) - currently under construction. Cynthia and I have known each other since 2015; I can provide her contact info upon request.

3) **Samantha Roberts** / 773-320-2424 / samroberts312@gmail.com / Executive Office Manager for Radix, a high-end tech company. / I worked with Sam on a few design projects geared toward trade show and marketing materials for previous employers. We are friends first and have known each other since 2016..

4) **Benjamin Rubach** / 312-915-0557 / brubach@dbhms.com / Former supervisor for 2.5 years. Letter of recommendation available.

Client List

AT&T
Stepan
Getmilk Digital
Kate Glickman Psychotherapy
Gabriel Palomo
Trusted Architecture
Creative Life Counseling Services
Artemis Counseling
ACCL Chicago
moss design
Stephanie Jensen Photography
Julia Steinmetz
Dome Construction
Arlington Security
Sonny's Glass Tinting
Cosmedent
Empirical Prime
Pineapple Audio
JAM Restaurant Group
DJ Duke Shin
DJ Frankie Vega
Format Recordings
Green Machine
Confidential Clients (3)